

**IABR—2014—
URBAN BY NATURE—**

Productive Space By Design

■

Conference

12 June 2014 Catalogue



Ministerie van Infrastructuur en Milieu

creative industries fund NL



Gemeente Rotterdam

This conference catalogue is compiled by Architecture Workroom Brussels.

The IABR–2014– has made every effort possible to comply with copyright laws, but has not in all cases managed to successfully trace the source of reproduced documents. If you believe that you are a copyright holder, please contact IABR–2014–.

Productive Space By Design

At the exact time that we are witnessing the rapid urbanization of the world, we also increasingly share the conviction that the dominant visions and policies for urban development are ineffective and untenable. On the one hand, the financial crisis has exposed the weakness of the funding models of traditional planning. And on the other, it is ever more clear that we should rethink urban development as a response to climate change, to the increasing scarcity of resources, and to social and environmental issues. As IABR–2014–URBAN BY NATURE–puts forward and demonstrates, the division between the urban and the natural has become artificial and counterproductive to the building of a sustainable future for cities, regions, and carpet metropolises.

An alternative model for urban development is both urgent and promising. It is urgent to explore new principles and working methods so that spatial transformation no longer adds to our future problems (as it often does today). But if these new principles allow us to mobilize the energy of existing and ongoing urbanization to co-produce answers to our actual and future challenges, then urban development holds a crucial promise. It is this urgency and promise of a more

‘productive space’ that motivates many researchers, designers, economists and bankers, policymakers, non-governmental organizations, cultural platforms, and activists throughout the world to explore alternative principles and methods for urban development, both in theory and practice.

The IABR–2014–CONFERENCE–PRODUCTIVE SPACE BY DESIGN– serves as a platform that brings a number of their programs, cases, and experiments together. The conference is intended as a conversation, as a collective thinking exercise around the following question:

Can design help us find an alternative model of urban development, one that does not capitalize on the exploitation of land and natural resources, but on the productive capacity of people and space?

Urban By Nature — A New Perspective, A New Practice?

Keynote Speech by Dirk Sijmons

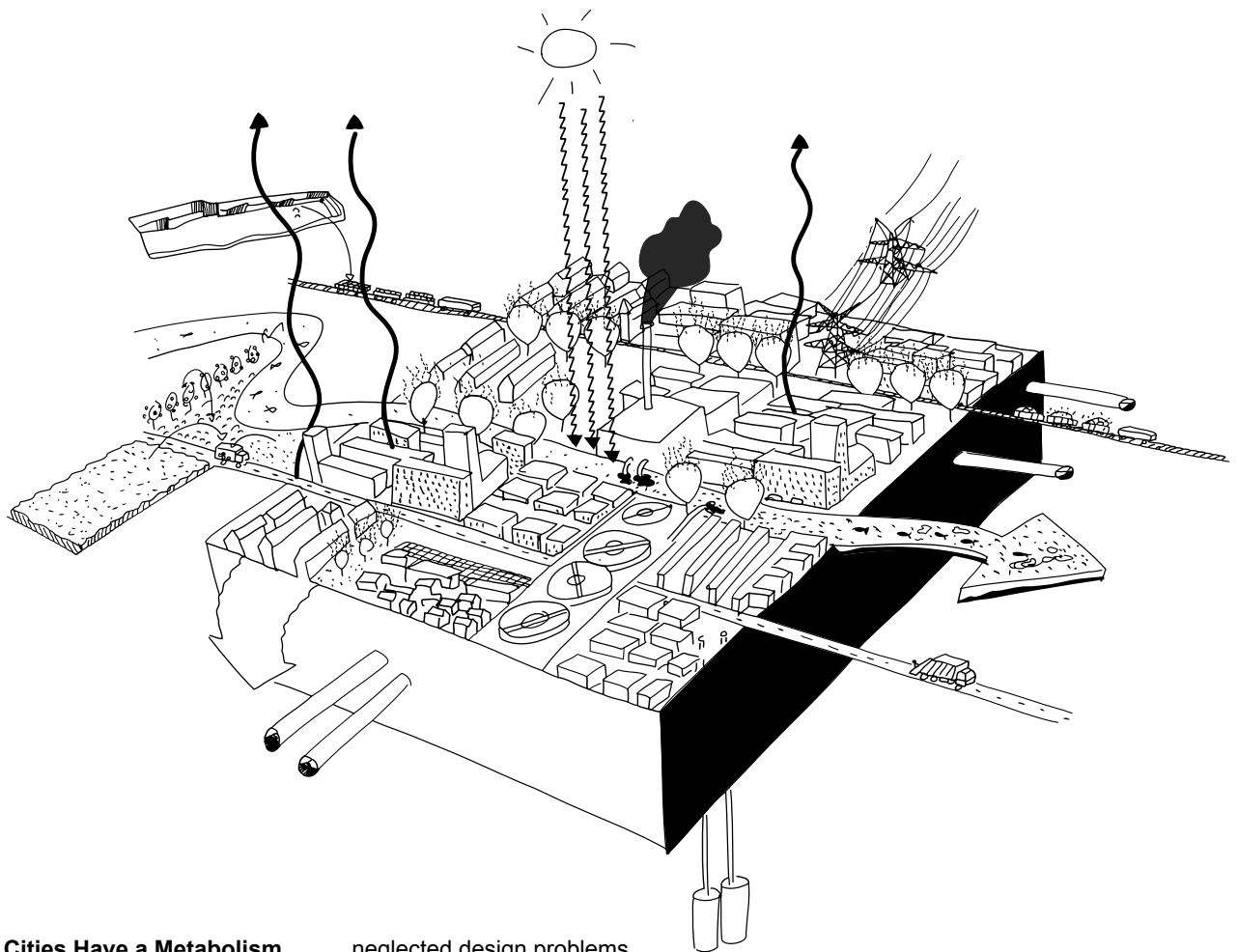
Dirk Sijmons

Dirk Sijmons is the curator of the IABR-2014-URBAN BY NATURE-. He is one of the three founders of H+N+S Landscape Architects. Dirk Sijmons was awarded the Rotterdam-Maaskant Prize in 2002. In 2004, Dirk Sijmons was appointed Governmental Advisor on Landscape by the Minister of Agriculture, Nature Management and Fisheries. In addition to his work for H+N+S, Sijmons is Professor of Landscape Architecture at Delft University of Technology.



IABR–Projectatelier Texel
Spatial developments will inevitably impact the economy and the landscape. What will happen if we set aside the conflict between the various developments and ambitions, and explore ways they can enhance each other? On Texel, creating a future-proof water system turned out to be the basis for an integrated approach to the set tasks as well as the catalyst for innovative developments that productively link tourism, ecology, economy, and the landscape.

credits: developed by la4sale and FARO, commissioned by IABR and Municipality of Texel.



Cities Have a Metabolism

Every flow has its own infrastructure. A flow is an abstract thing, and with its infrastructure it becomes concrete. What is interesting for designers is that these infrastructures are often

neglected design problems. These flows are ways of announcing the environmental performance of an urban system.

credits: H+N+S Landscape Architects





Texel Principles for Integral Development

'The Texel Principles' lists guiding principles. These can provide starting points for every kind of initiative, whether with regard to tourism, ecology, economy, landscape architecture or culture, and an 'agenda' for discussing such initiatives. They are also instrumental in

connecting developments in various policy areas, thereby increasing their quality and durability.

credits: developed by La4sale and FARO, commissioned by the IABR and the municipality of Texel



Texel T

The IABR Projectatelier Planet Texel was created not only by design, but also through interaction with the people of Texel. For example, anyone could give their opinion in front of the camera, face hidden in the travelling,

black wooden Texel T, offering the design agencies the possibility to collect a whole range of (sometimes contradictory) opinions and ideas. This process is one of the pillars of the plan development.

credits: I see for you © Hans Peter Föllmi



Angling for Land

The developments Texel faces force the island to consider new types of land use. Traditional dike reinforcement makes way for innovative, soft, natural banks that simultaneously provide a basis for sea farming and energy production.

credits: developed by la4sale and FARO, commissioned by the IABR and municipality of Texel

Session 1

REINVENTING DEVELOPMENT

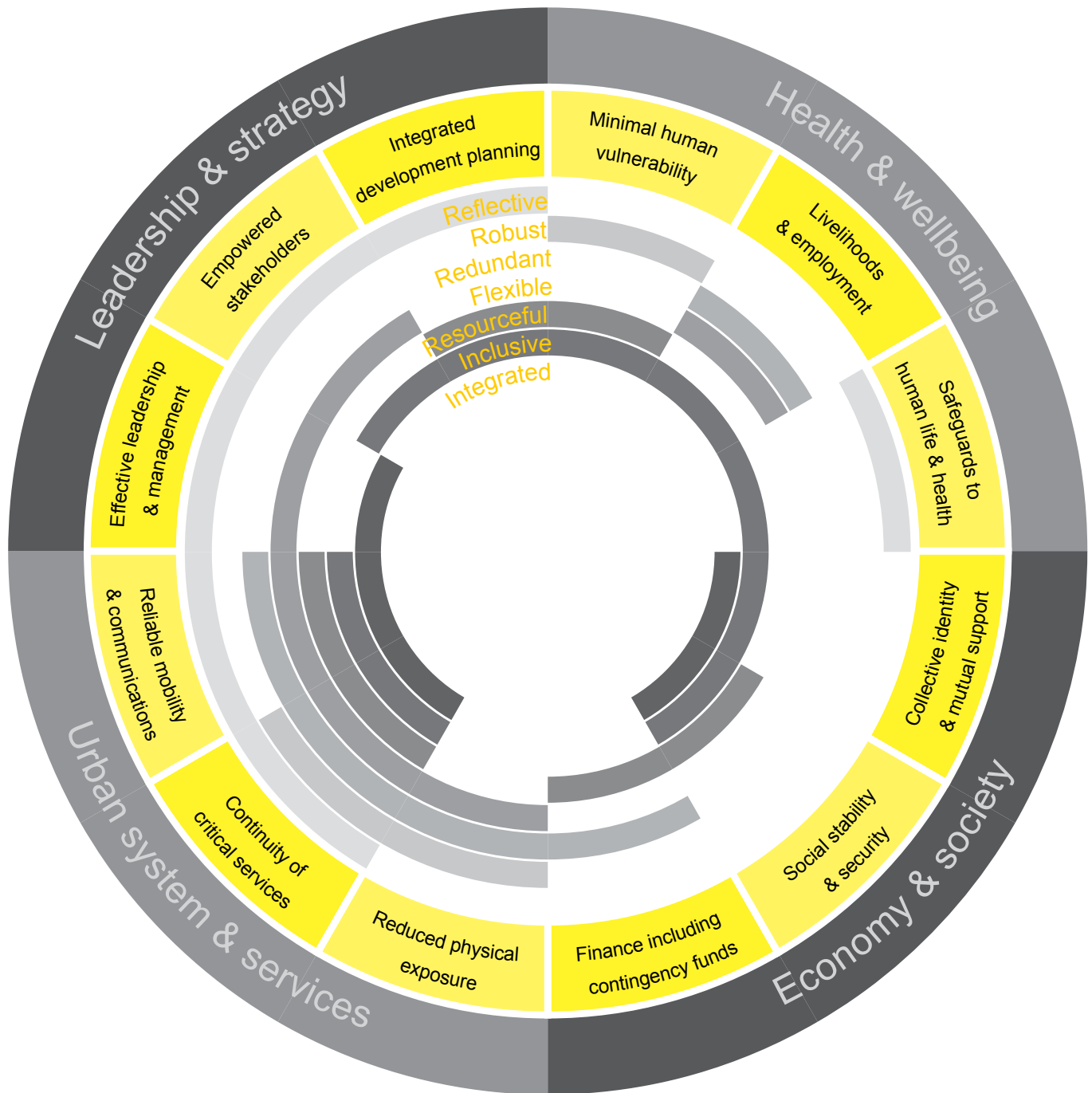
If today we insist on consuming land and space as if it were a commodity, and without taking social and environmental costs into account, we produce the problems of tomorrow.

Resilience: From Principle To Policy And Practice

Keynote Speech by Nancy Kete

Nancy Kete

Dr. Nancy Kete joined the Rockefeller Foundation in January 2012. As Managing Director, Dr. Kete leads the foundation's global work on resilience including developing strategies and practice for infusing resilience thinking throughout the foundation's work. During her 25 year career in government, civil society, and private sector, Dr. Kete brought technical, institutional, and managerial leadership to bear on a number of major environment and societal challenges. She has been a diplomat, a climate change negotiator, a social entrepreneur, and a fund-raiser.



City Resilience Framework

Every city is unique. The way resilience manifests itself plays out differently in different places. The City Resilience Framework provides a lens through which the complexity of cities and the numerous factors

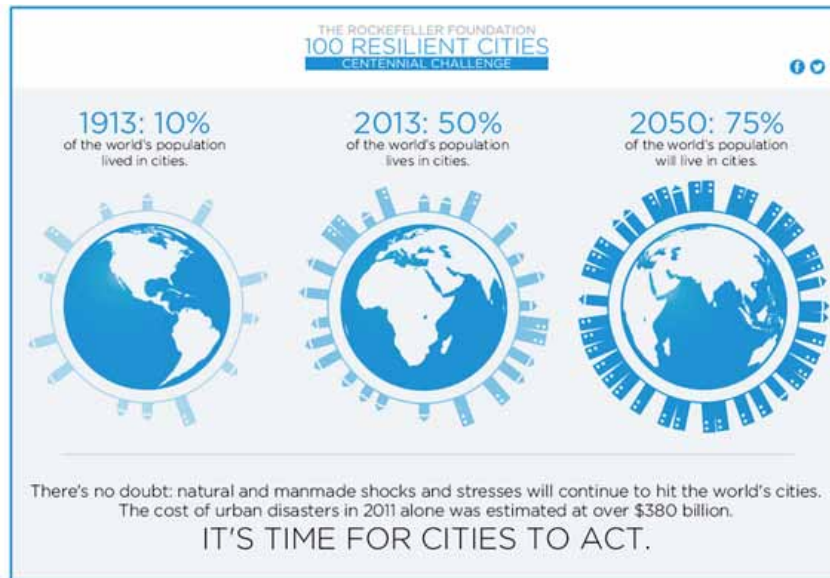
that contribute to a city's resilience can be understood. It comprises 12 key indicators that describe the fundamental attributes of a resilient city.

credits: The Rockefeller Foundation & ARUP International Development

100 Resilient Cities

100 Resilient Cities, pioneered by the Rockefeller Foundation, defines resilience as: 'The capacity of individuals, communities, institutions, businesses and systems within a city to survive, adapt, and grow no matter what kinds of chronic stresses and acute shocks they experience.' Simply put, resilience enables people to bounce back stronger after tough times, and live better in good times. No matter what the city's conditions, resilient systems share and demonstrate certain core characteristics.

credits: 100 Resilient Cities, Rockefeller Foundation



New Meadowlands, Rebuild By Design

The New Meadowlands project articulates an integrated vision for protecting, connecting, and growing this critical asset to both New Jersey and the metro-politan area of New York. The Meadowpark connects and expands

marshland restoration efforts by the New Jersey Meadowlands Commission, and makes them accessible. The Meadowband defines the edge of the Meadowpark, offering flood protection, connections between towns and wetland, and opportunities for towns to grow. It brings together

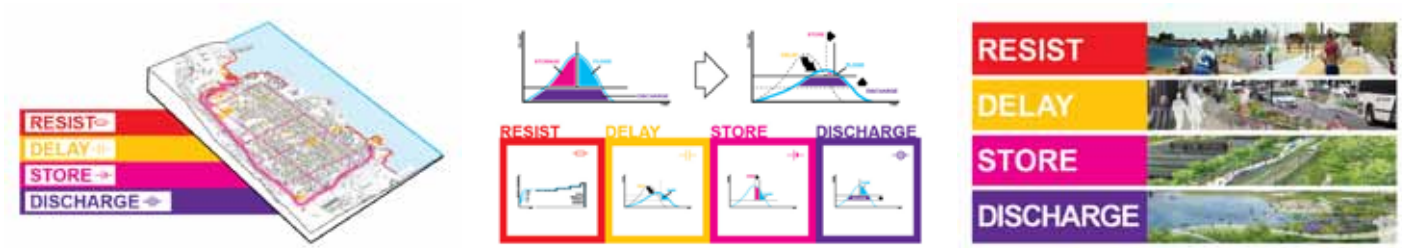
different systems (such as transport, ecology, and development) and different scales (from local to regional), as well as local residents and visitors from further afield who will gather at this new civic amenity.

credits: MIT CAU + ZUS + URBANISTEN



BIG U, Rebuild By Design
 BIG Team brings together significant international experience with a deep understanding of this Sandy region's economic, political, and social environment. The team's approach is rooted in the two concepts of social infrastructure and hedonistic sustainability. By proactively cross-breeding public infrastructure with social programs, the team will inject new urban life forms into our cities.

credits: BIG TEAM



Resist, Delay, Store, Discharge: A Comprehensive Strategy for Hoboken, OMA
 With a focus on high-density urban environments, the team's driving principal is one of integration. The tools of defense should be seen as intrinsic to the urban environment, and serve as a scaffold to enable activity.

This will necessitate an approach that is both holistic and dynamic, one that acknowledges the complexity of systems at play, and one that works with, rather than against, the natural flow.

credits: OMA with Royal HaskoningDHV; Balmori Associates; and HR&A Advisors

For A New Development Model

Roundtable

Floris Alkemade

Floris Alkemade joined the Office for Metropolitan Architecture in 1989 and has worked as a project director for architecture and urban planning since 1996. As of 2001 he was one of the directors/partners of the office. Floris Alkemade started his own practice FAA in august 2008.

Pierre Bélanger

Pierre Bélanger is Associate Professor of Landscape Architecture at the Harvard Graduate School of Design, Co-Director of OPSYS, and Advisor to the US Army Corps of Engineers. As part of the Department of Landscape Architecture and the Advanced Studies Program, he teaches courses on the convergence of ecology, infrastructure and urbanism in the interrelated fields of design, planning and engineering.

Fred Van Beuningen

Fred van Beuningen is managing director of Rotterdam Partners, the promotor of the Rotterdam economy. Rotterdam Partners serves all target groups that are relevant to the urban economy and city marketing: businesses, business or leisure visitors, local residents and students. Launched on 1 January 2014, the foundation is a merger between the Economic Development Board Rotterdam, Rotterdam Investment Agency and Rotterdam Marketing.

Roelof Bleker

Roelof Bleker has been Dijkgraaf of the Rivierenland water board since October 2010. Previously, he was the Alderman of Spatial Planning with the municipality of Enschede for nine years. His experience as an alderman serves him well in deliberations with the various municipalities in the water board management area.

Eric Frijters

Eric Frijters is Principal at FABRIC – architecture, urbanism, regional strategies, and Professor (Lector) Future Urban Regions (FUR) at the Dutch Academies of Architecture. Frijters is (co)author of several books such as ‘Farm Tycoon’, ‘Tussenland’, ‘Architect by accident’ and ‘The making of ...’ and published in various journals. Frijters is co-founder of FABRIC together with Olv Klijn.

Nancy Kete

Dr. Nancy Kete joined the Rockefeller Foundation in January 2012. As Managing Director, Dr. Kete leads the foundation’s global work on resilience including developing strategies and practice for infusing resilience thinking throughout the foundation’s work. During her 25 year career in government, civil society, and private sector, Dr. Kete brought technical, institutional, and managerial leadership to bear on a number of major environment and societal challenges. She has been a diplomat, a climate change negotiator, a social entrepreneur, and a fund-raiser.

Dirk Sijmons

Dirk Sijmons is the curator of the IABR–2014–URBAN BY NATURE–. He is one of the three founders of H+N+S Landscape Architects. Dirk Sijmons was awarded the Rotterdam-Maaskant Prize in 2002. In 2004, Dirk Sijmons was appointed Governmental Advisor on Landscape by the Minister of Agriculture, Nature Management and Fisheries. In addition to his work for H+N+S, Sijmons is Professor of Landscape Architecture at Delft University of Technology.

**Space Is Considered A
Commodity, Ready To Be
Consumed**

**Our Urbanized
Landscape Is Our First
Resource**

**Designing
Synergies Between
Natural Systems,
Infrastructures, And
Users**

**Rethinking Our Excel
Sheets, Land Policies
And Regulations**

Space Is Considered A Commodity, Ready To Be Consumed



Rebuild By Design

Initiated by the US Department of Housing and Urban Development and the Presidential Hurricane Sandy Rebuilding Task Force, Rebuild by Design's aim has been to connect the world's most talented researchers and designers with the

Sandy-affected area's active businesses, policymakers, and local groups to better understand how to redevelop their communities in environmentally – and economically – healthier ways and to be better prepared.

credits: Rebuild By Design



Hurricane Sandy's Aftermath

The storm has caused massive flooding across much of the Atlantic seaboard. Most homes in the seaside community Ocean Breeze area of the Staten Island borough of New York City were inundated by the ocean surge caused by Superstorm Sandy.

credits: photos by Mario Tama, John Moore, Andrew Burton/Getty Images.

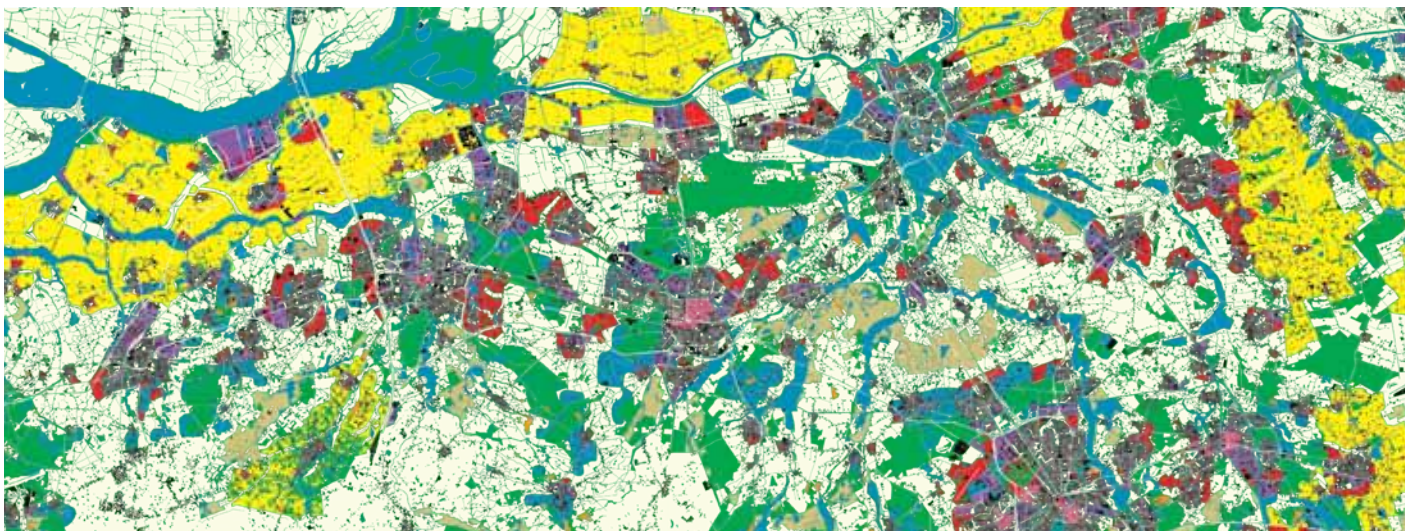
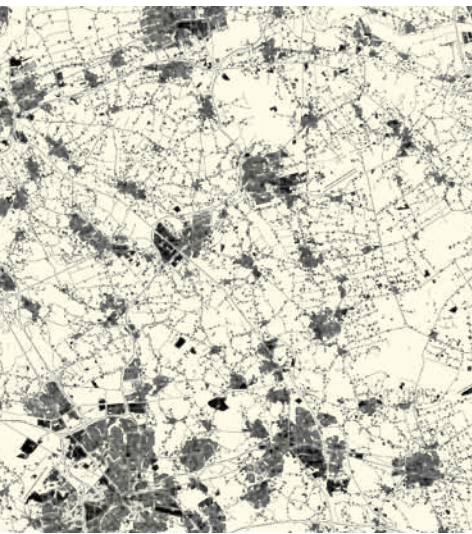




Resilience Workshops: New Orleans

The Louisiana city is one of the first 33 cities selected for the 100 Resilient Cities Challenge. From Hurricanes Katrina, Rita, and Isaac, to the Deepwater Horizon oil spill, New Orleans is no stranger to dealing with – and recovering from – catastrophe.

Credits: 2014 The Rockefeller Foundation



IABR–Projectatelier Brabantstad

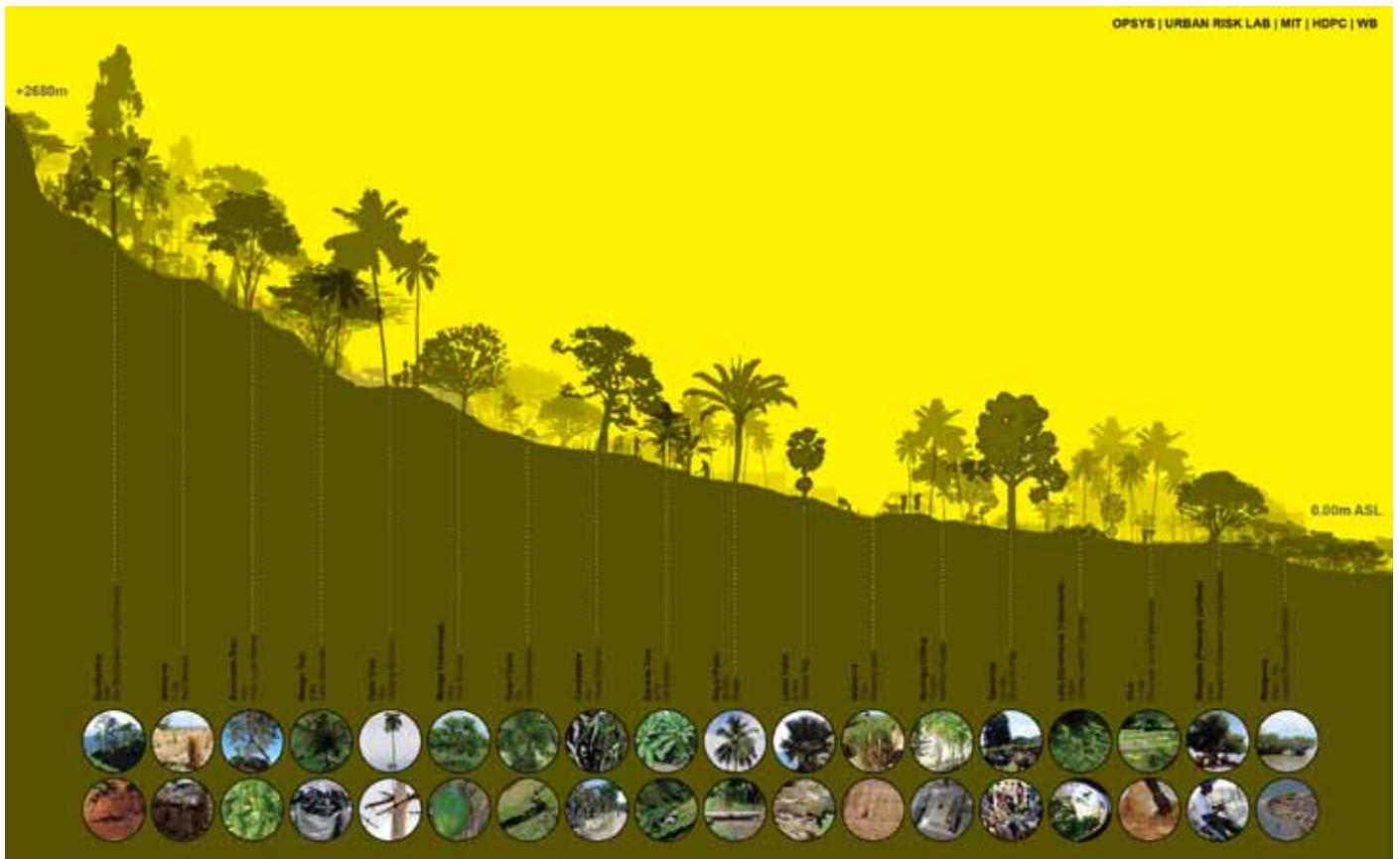
Brabantstad is a dispersed city. Brabant has been struggling for decades with the spatial diagnosis that ‘the towns just do not want to become towns and the villages are losing their village-like

character.’ They have been counteracted or actually encouraged by means of active ‘concentration’ and/or ‘decentralization policies.’ Architecture Workroom Brussels, Floris Alkemade, and LOLA landscape architects studied how the specific qualities and

challenges of the Brabantstad carpet metropolis can be used for development and action.

credits: Architecture Workroom Brussels, Floris Alkemade and LOLA landscape architects, commissioned by IABR

Our Urbanized Landscape Is Our First Resource



Vegetation as Risk System

The natural and constructed cover of plants is a living infrastructure and cultural economic resource that is preventive, programmatic and systemic. The vegetation that spreads across the Haitian landscape from coast to plains to mountains

is a biophysical system that prevent different environmental risks (erosion control to wind buffer). This living system is also put to other cultural ends by Haitians, whereas the vegetation is an active component of regional agrarian economies, micro-

climates, as well as personal nutritional and medicinal livelihoods that help from a robust health infrastructure that is continuously cultivated.

credits: 'Haiti Risk Landscape Rosa Barba', Pierre Bélanger

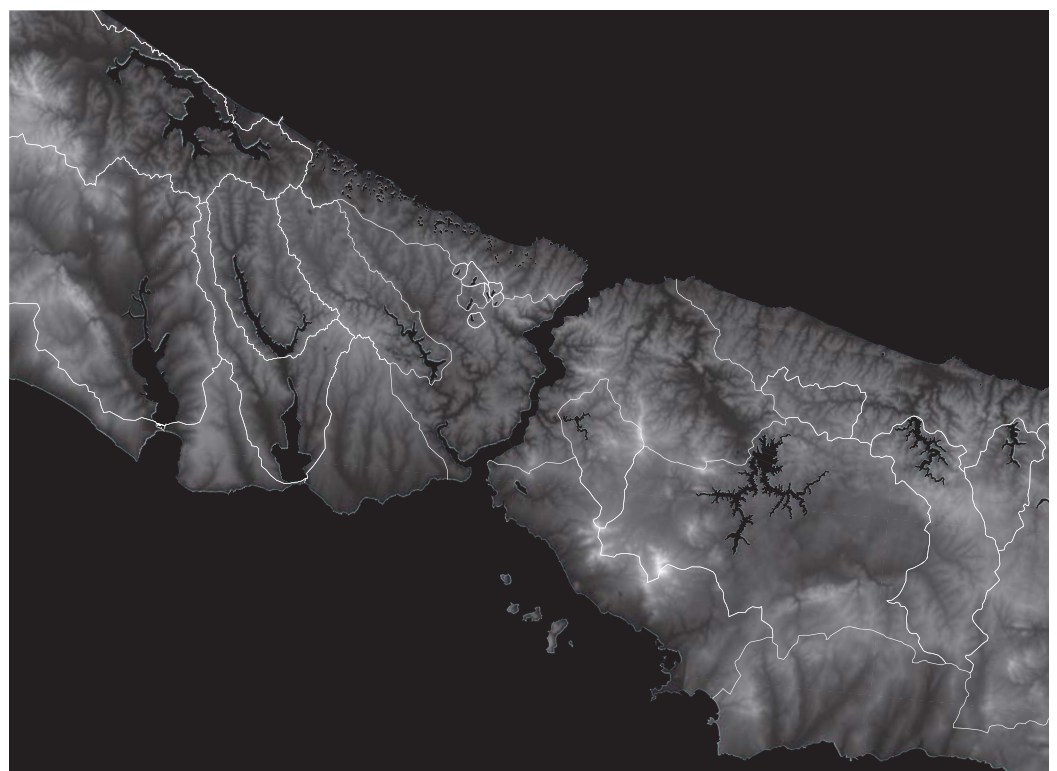
IABR-Projectatelier

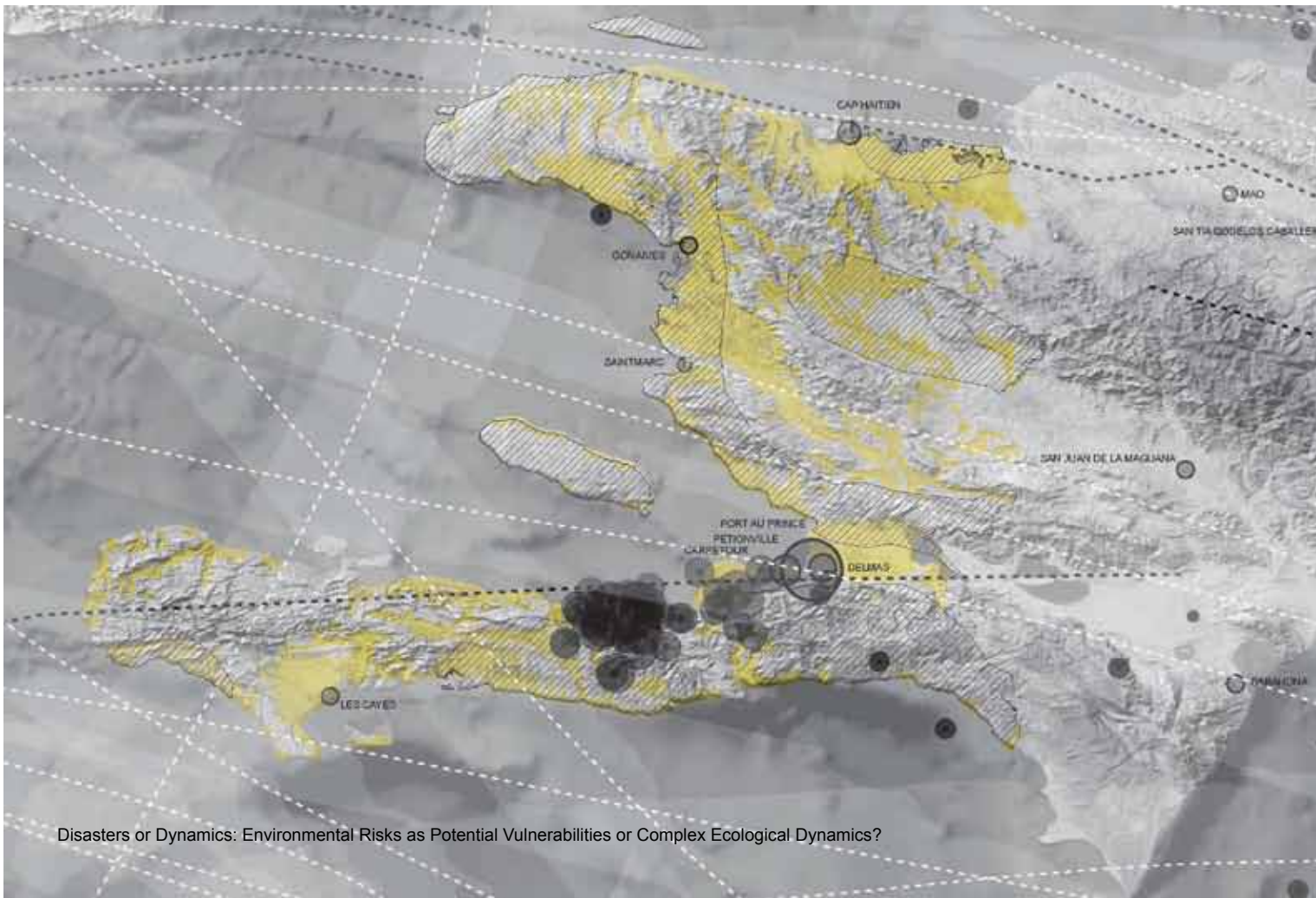
Istanbul:

Topography as Opportunity

Two specific aspects of Istanbul are combined in the proposal. The first involves the city's topography: the characteristic relief of Istanbul consists of a vast system of ridges and basins covering the entire region. The proposal reads Istanbul as a collection of 'cups'; this provides the appropriate development unit for the urgent issues of water protection.

credits: Arnavutköy, Istanbul Making City 5th International Architecture Biennale Rotterdam 51N4E, H+N+S, AWB





Disasters or Dynamics: Environmental Risks as Potential Vulnerabilities or Complex Ecological Dynamics?

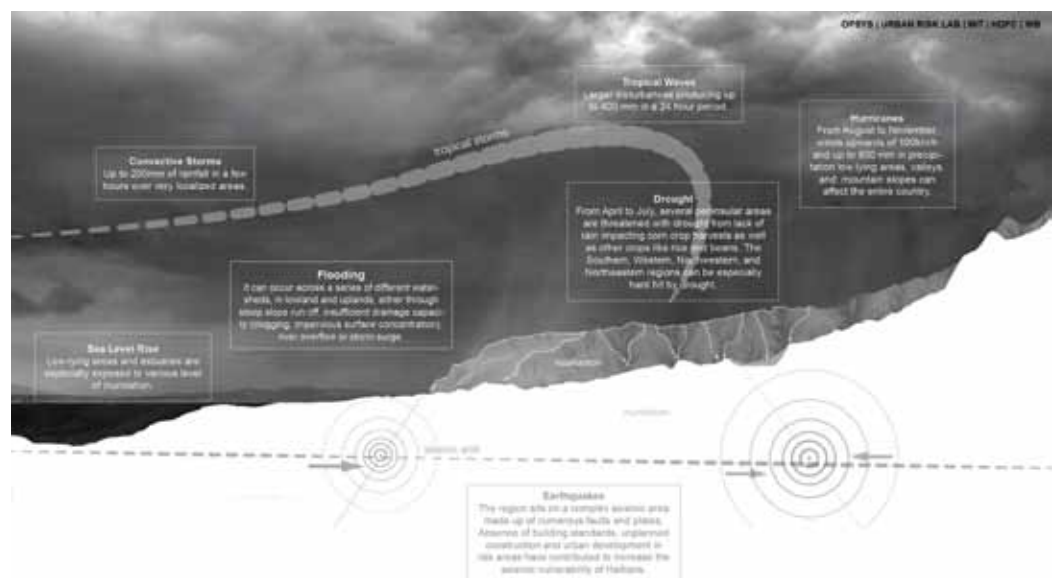
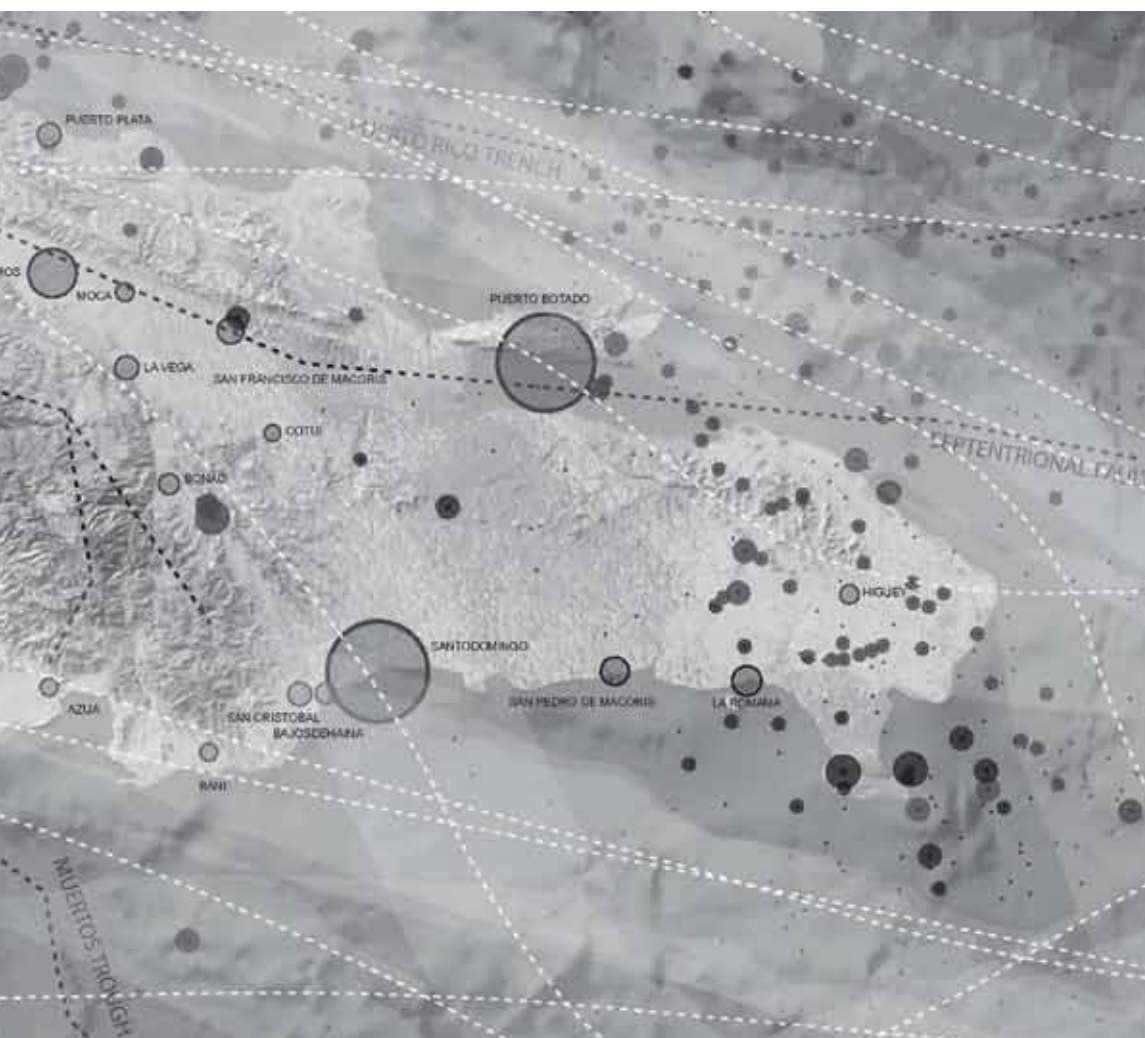
Haiti Urbanism without Infrastructure

Despite being the poorest country in the Western Hemisphere, Haiti's urban life reflects the ingenuity and innovation of a flexible culture living with dynamic urban conditions that survive

with little support, and push forward in the absence of infrastructure. Haiti deals with a series of risks, hazards, and vulnerabilities conventionally portrayed as disadvantages or dangers, constraints or impediments to development.

Instead, they are portrayed here as advantages, circumstances with strategic potentials for a preemptive pattern of urbanization for the next, imminent hazards of coastal, island life in the Caribbean.

credits: Risk Ecologies
Landscape of Contingency
Flexible Urbanization, Haiti
509, Pierre Bélanger



The Valley of Vulnerability as Regional, Ecological Strategy

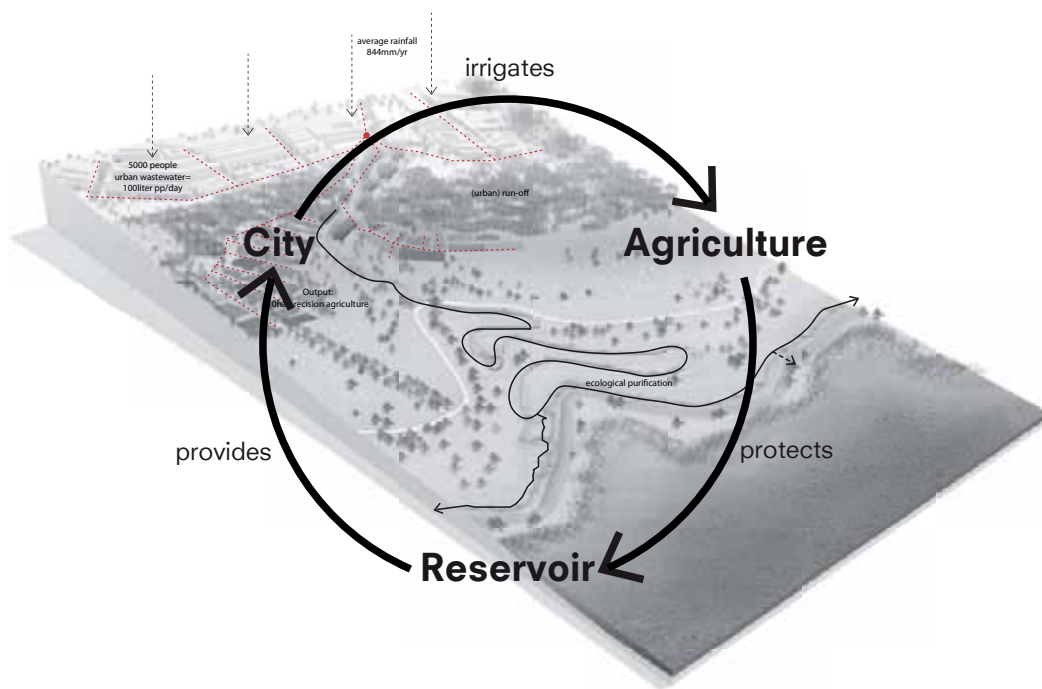
In Haiti, risks are hyper-localized. This strategic coupling of different sectors and infrastructures links disaster risk management, from warning to evacuation, across a valley of different vulnerabilities that are upstream and downstream,

in order to build a resilient system from risk reduction to disaster recovery. By coupling the hyper-localization on environmental risks with the extreme temporalities of socioeconomic structures, a series of sophisticated market geographies across coasts, valleys, plateau and mountain ranges, reveal the robustness of rural-regional economic

systems and the effectiveness of their attendant, micro-infrastructures, as both system and strategy.

credits: Risk Landscape, A National System of Evacuation Parks for Haiti, Pierre Bélanger

Designing Synergies Between Natural Systems, Infrastructures And Users



IABR-Projectatelier Istanbul, Making City: the Readable Landscape, proposition for the water cycle

The proposal takes up the gradient protective zones of the master plan. It refines them by relating them back to natural topography. It shapes the landscape into zones with specific content and physical expression, to prevent land misuse. Subtle landscape elements form clear boundaries between the zones and offer a variety of uses.

credits: 5th International
Architecture Biennale
Rotterdam 51N4E, H+N+S,
AWB



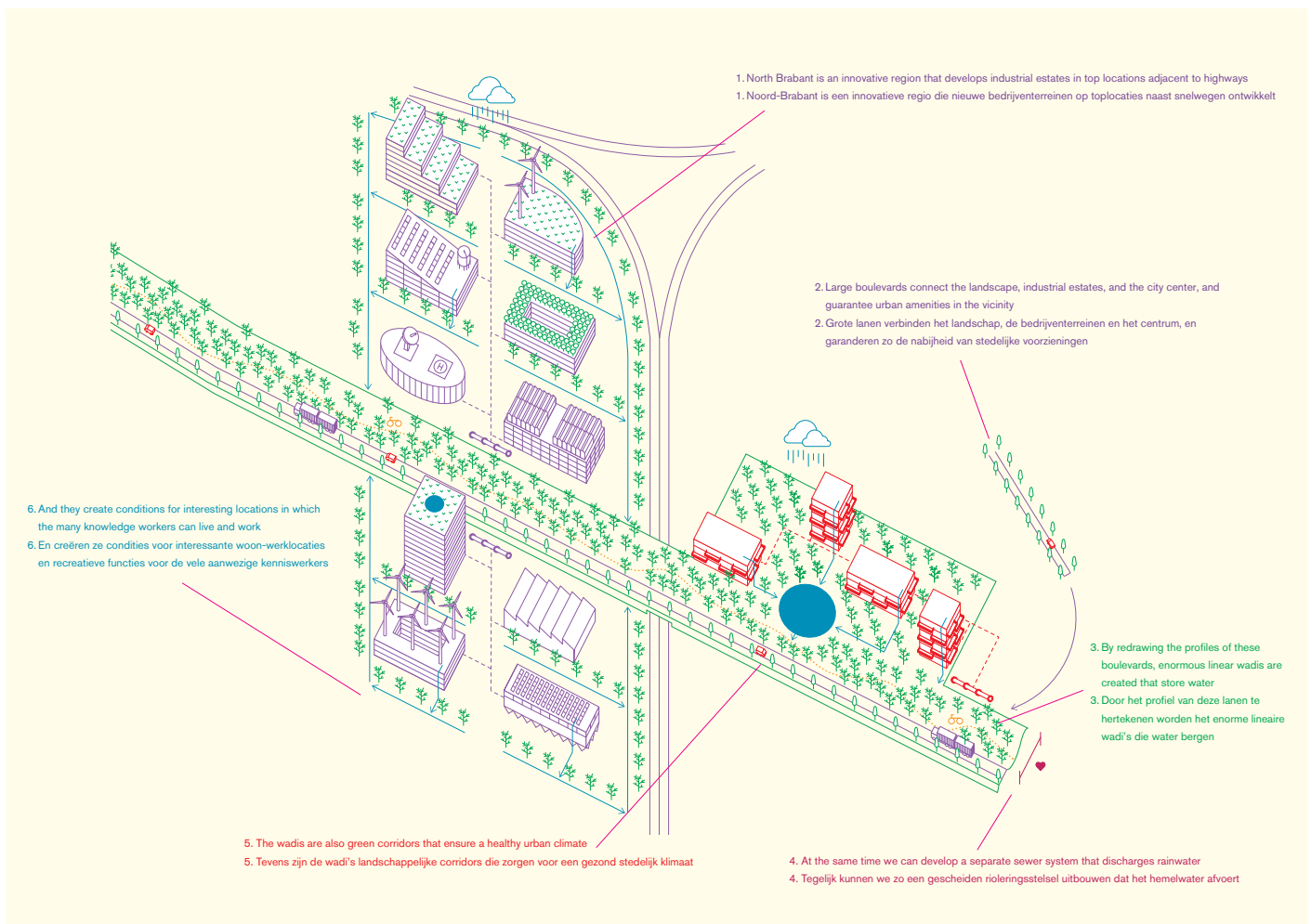
IABR-Projectatelier Rotterdam

The IABR-Project Atelier Rotterdam studied how the urban metabolism philosophy can contribute to the sustainable development of the city. If we analyze, understand, and learn to manipulate the structure

and the metabolism of the city, then we can make a tangible contribution to its resilience and thus to a more sustainable future. Nine vital flows are mapped and analyzed: goods, people, waste, biota, energy, food, fresh water, air, sand and clay. The maps show the

underutilized potential hidden in the urban landscape of Rotterdam.

credits: developed by FABRI and JFCO, commissioned by the IABR and the City of Rotterdam



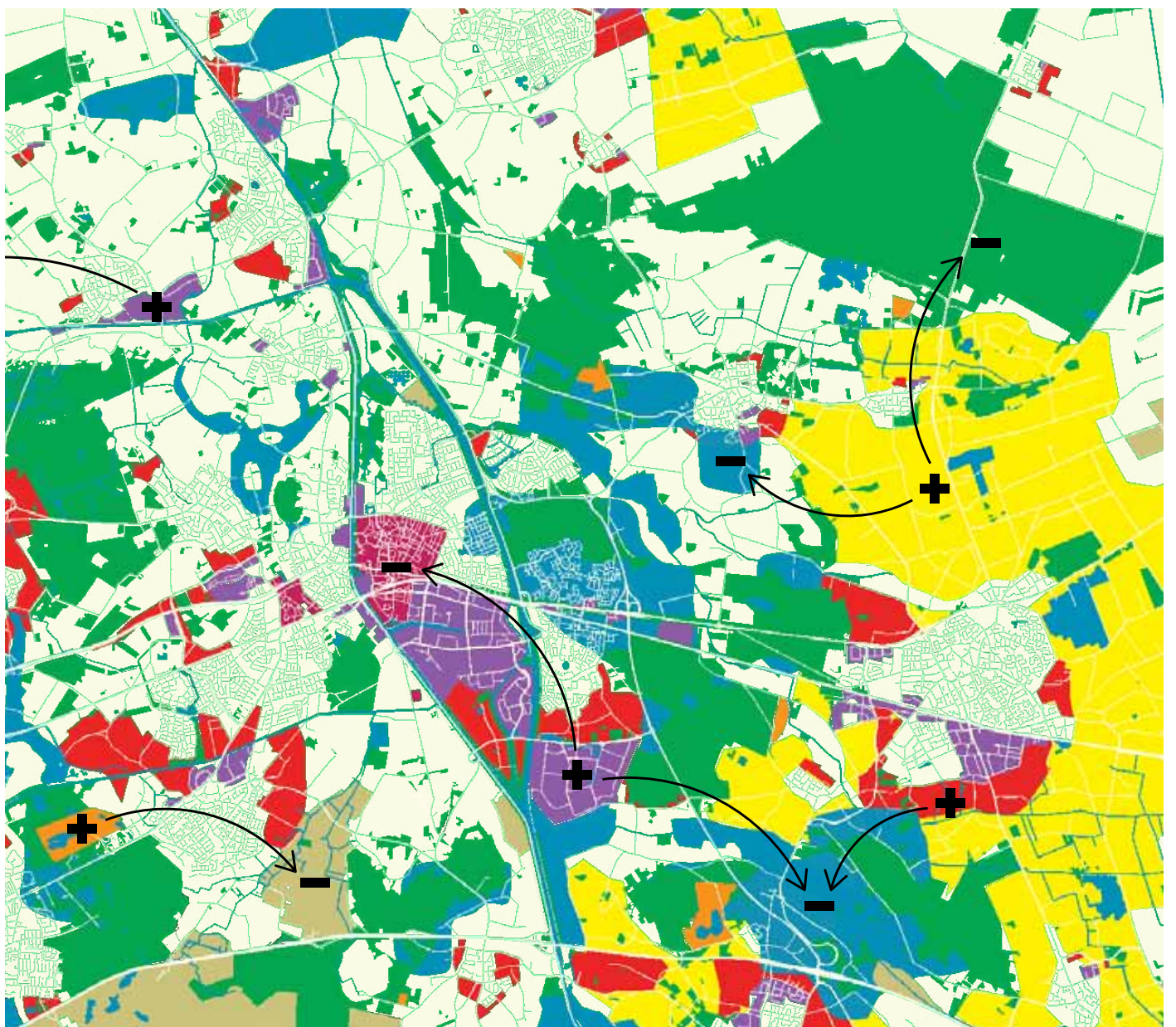
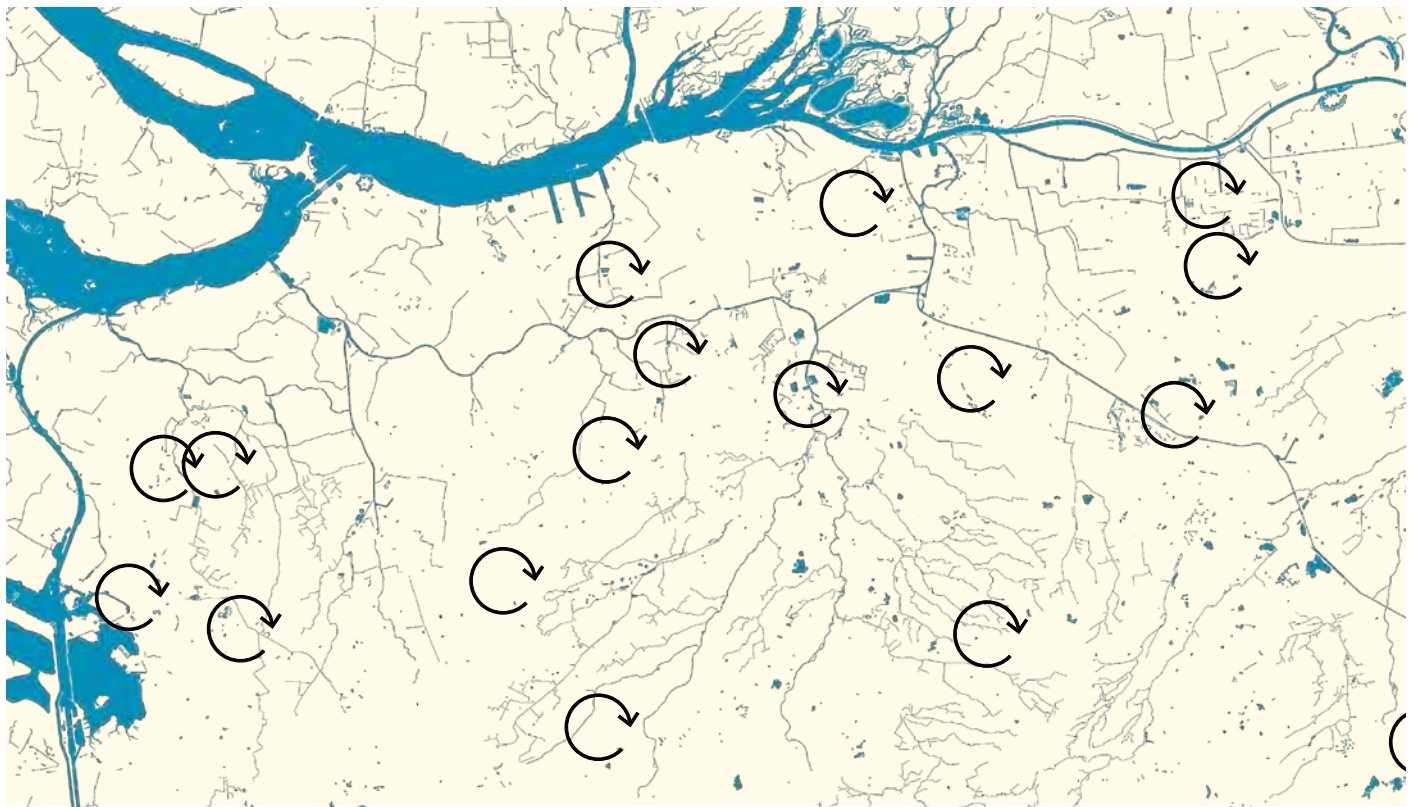
IABR-Projectatelier Brabantstad

What are the qualities and functions of the landscape?
What are the conceivable spatial configurations in which various forms of land use in the urban landscape can look forward to a sustainable future? Which hurdles will we encounter in the process

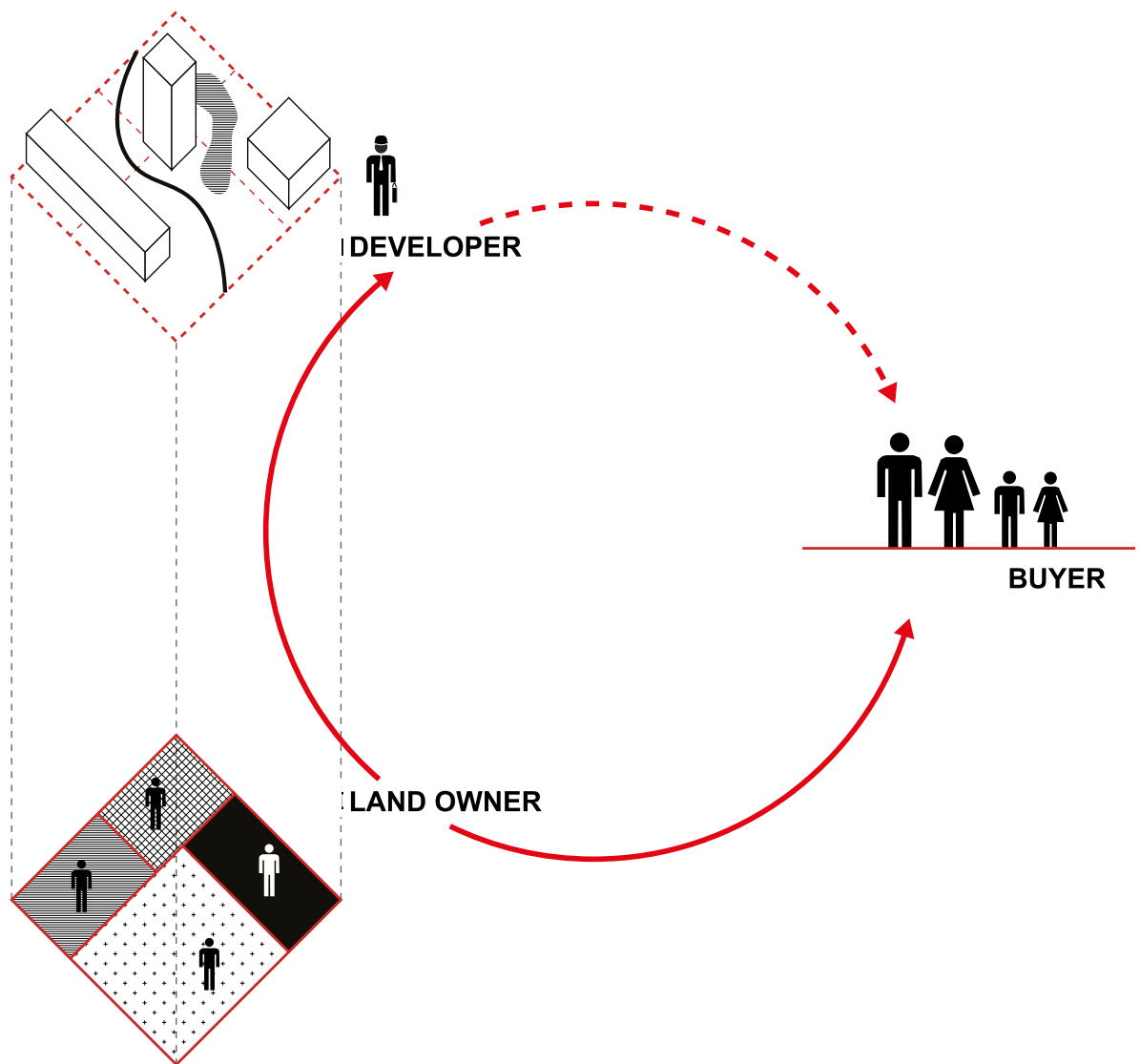
and in the administration?

How, in the midst of all these developments, can we achieve optimal guidance of this urban landscape?

credits: Architecture Workroom Brussels, Floris Alkemade and LOLA landscape architects, commissioned by IABR 2014



Rethinking Our Excel Sheet, Land Policies, And Regulations

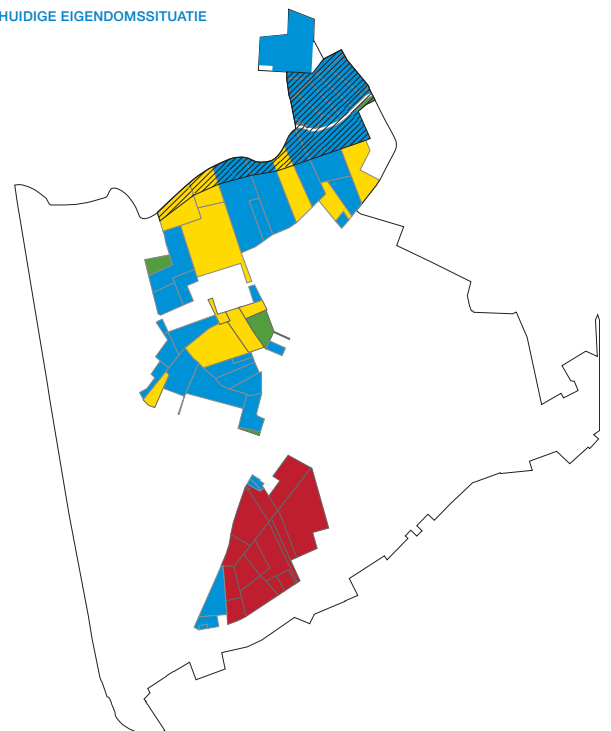


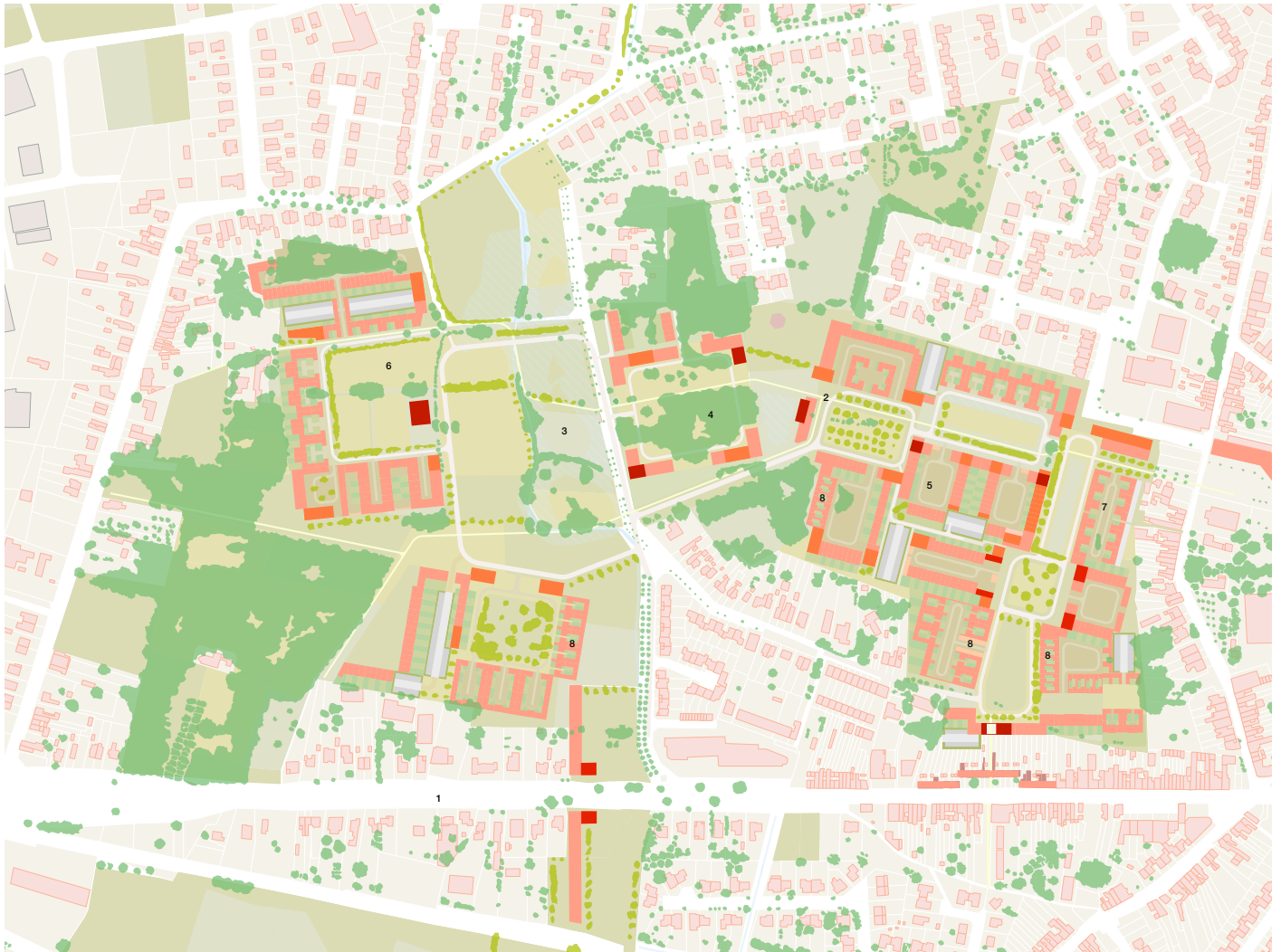
Schorvoort, Turnhout Land Coalition

The property boundaries are not erased, but merely temporarily frozen for the development of a collective vision. The land remains the property of the coalition members until it is sold.

credit: Pilot Projects
Collective housing, five master plans launched, phase 2. Team Vlaams Bouwmeester
Design Team: Trans, Something Fantastic, Monadnock, Marleen Goethals

HUDIGHE EIGENDOMSITUATIE





Pilotproject Collectief Wonen Middenheide, Beveren
 Wonen in een collectief landschap: dat moest het uitgangspunt worden van dit Pilotproject. De uitdaging bestaat erin een nieuw model uit te tekenen dat

zuiniger omspringt met de open ruimte. Door compact te bouwen en collectief te wonen komt ruimte vrij die omgevormd kan worden tot een collectief landschap ten behoeve van de bewoners en de omliggende woonkernen.

credits: Pilotprojecten Collectief Wonen Vijf masterplannen uit de startblokken, Fase 2. Team Vlaams Bouwmeester
 Ontwerpteam: Bovenbouw, Labo S (UGent)

Rebuild-by-Design Finance

From the outset, Rebuild by Design has been committed to transforming each team's research and design into realized projects rather than leaving them to live on as charts, graphs, and computerized renderings. To do this, though, teams need to consider one of the most formidable challenges confronting any large project: the mechanisms of finance. Disaster preparation and recovery demand robust

investments. This is all the more pressing since the need for disaster spending is usually highest when the capacity for that spending is lowest: in the immediate aftermath of a devastating storm or other catastrophe. As part of the research and design process, teams explored ways of funding their ideas. For each of its design opportunities, the Interboro Team, for example, included finance strategies that would render their designs implementable,

even for communities lacking resources. These ideas include tax increment financing and casualty loss deductions.

One way to do this is for governments to establish collective financing provisions for resiliency-related investments, in particular through an 'infrastructure bank.' In the face of the enormous costs and long timelines typical of infrastructure provisioning, a specialized institution could

set priorities between multiple potential projects, coordinate funding and environmental reviews, and solicit financial support from more senior levels of government and non-governmental sources – and do this across jurisdictions (including states) throughout the Sandy-affected region.

credits: 2014 Rebuild By Design | A Regional Analysis | rebuildbydesign.org

Flood-proofing grant programs could thus be made contingent on recipient businesses implementing certain collective-action goals, such as establishing a merchants' association, which would make achieving overall resiliency objectives easier.

credits: HR&A Advisors, Inc. with Cooper, Robertson & Partners



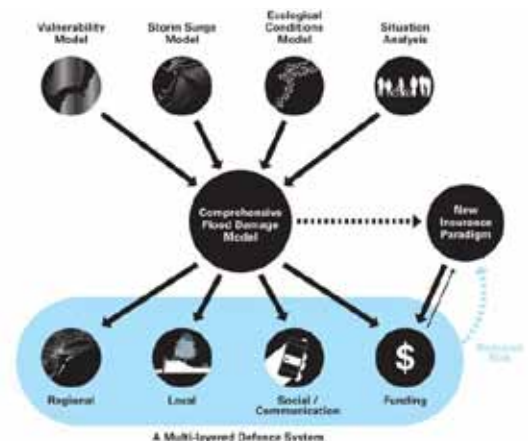
In New York City, NYCHA and other cash-strapped public agencies might be able to develop underused land and use the revenues to repair damage and improve resiliency at NYCHA buildings in Lower Manhattan, Red Hook, and elsewhere, which were severely damaged during Sandy.

credits: BIG TEAM



A multilayered defense system for a new insurance paradigm.

credits: WXY/West8



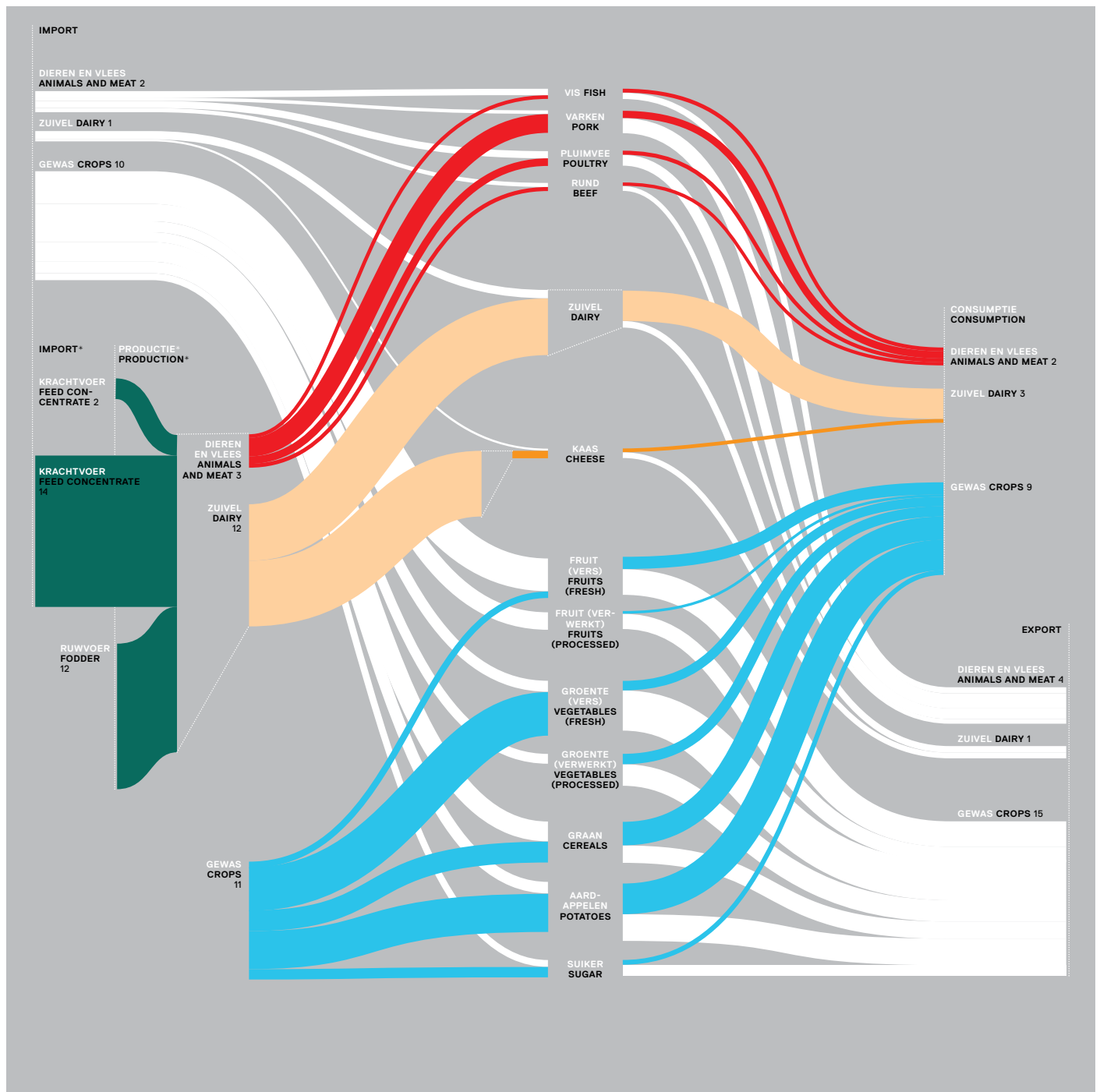
Smart Urbanism For An Energetic Society

Keynote Speech by Maarten Hajer

Maarten Hajer

Maarten Hajer is Director-General of the Netherlands Environmental Assessment Agency since 2008.

Hajer is member of the UN's International Resource Panel (IRP) hosted by UNEP, concerned with strategic issues of resource scarcity, decoupling and resource-efficiency. Maarten Hajer is also professor of Public Policy at the University of Amsterdam and holds an honorary professorship at the University of Copenhagen.



The travels of food

Food is a global market, with products and ingredients travelling over long distances. The Netherlands occupies a special position

within this global food network: the country is a high-tech agricultural superpower, that makes maximum use of its favourable agricultural conditions and its strategic

position in international trade and freight distribution.

credits: Netherlands Environmental Assessment Agency

Session 2

INNOVATING PRACTICE

Rethinking urban development from the perspective of synergy between space and users requires new practices. Can urban regions innovate their policies and actions by putting design first?

Redesigning Policy

Keynote Speech by Peter Swinnen

Peter Swinnen

Peter Swinnen, Freek Persyn and Johan Anrys founded the architecture practice 51N4E in 1998. Since its inception 51N4E has contributed to social and urban transformation by means of design & research. In 2010, Peter Swinnen was appointed Chief Architect (Vlaams Bouwmeester, 2010-15). As a spatial advisor to the Flemish Government Swinnen aims at enhancing the public awareness for a high quality oriented building culture. With his team of 20 experts he has developed a set of new strategic instruments allowing 'research by design' to become an integrated policy making tool.



Atelier Bouwmeester

The Atelier Bouwmeester was inaugurated in January 2012. It makes the functioning of the Vlaams Bouwmeester Team visible in the city. Their operations do not, after all, need a full-blooded office space, but rather a studio environment, a no-nonsense space in which thinking about architecture and building culture are effectively tested and displayed, by means of small-scale in-house activities like workshops, seminars, juries, gallery presentations and lectures. The Atelier Bouwmeester is an 'open house in the city'. It has become the place where the Flemish government consciously opens itself to the spatial debate, where existing efforts are publicized, and where, in collaboration with experts, new visions of the future are developed, tested and rolled out.

credits: Flemisch Government Architect



VIA SPACE

Flanders in Action ('Vlaanderen in Actie' – ViA) is a Flemish government initiative to place Flanders among the top five European regions by 2020. It is an ambitious plan that is fully committed to innovation, internationalization, infrastructure and quality of life. None of these ambitions can be realized, however, without a solid spatial transposition. The Vlaams Bouwmeester Team,

together with experts and partners from the field, intends to develop spatial and architectural scenarios for Flanders in an international context. One line of exploration entails the study of cross-regional or cross-border areas – areas with a potentially high profile and an international identity, along the lines of the Trinational Eurodistrict Basel model.

credits: Flemisch Government Architect

Pilot Projects

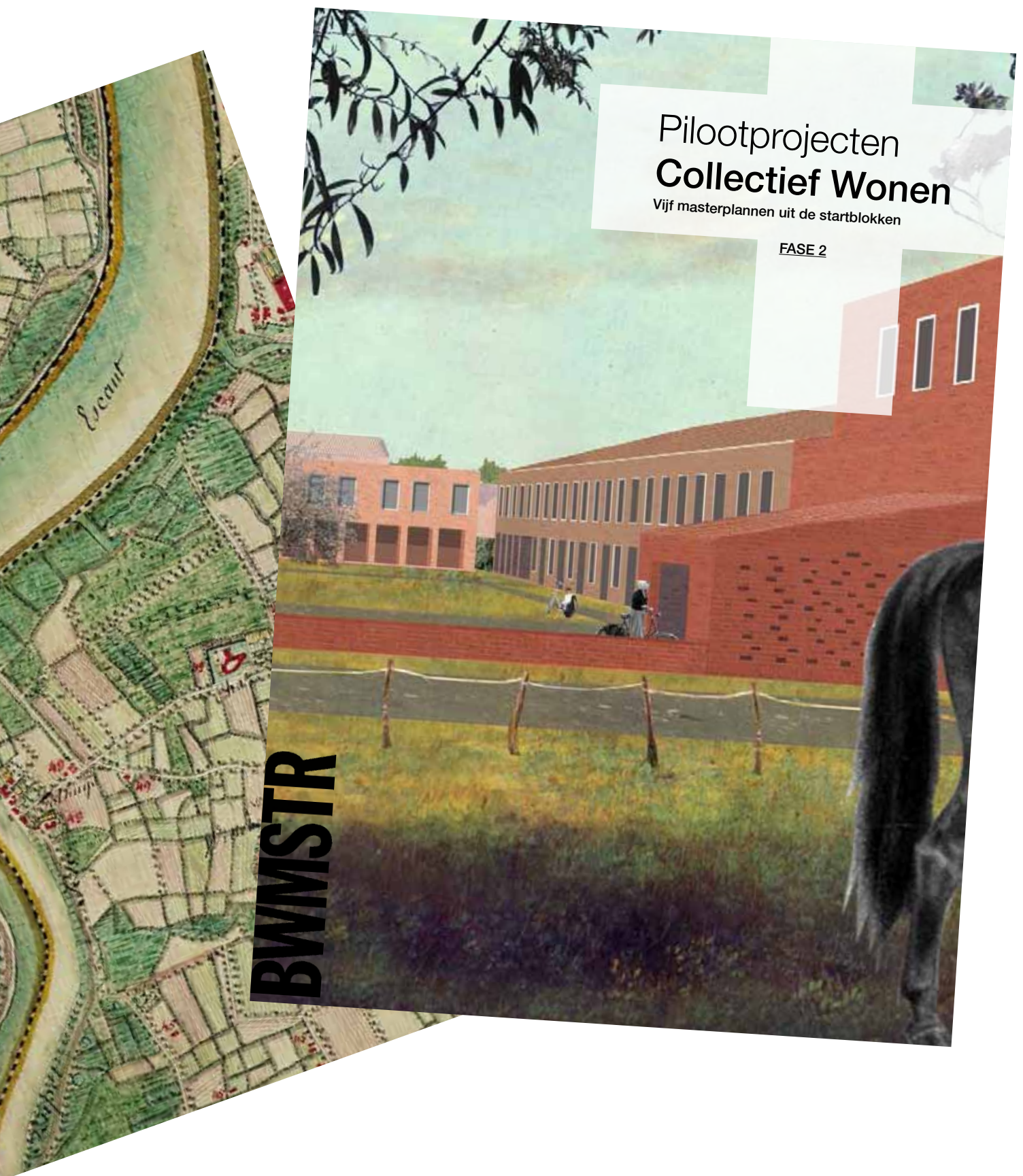
Impressive statistics need to be accompanied by impressive ambitions. The Vlaams Bouwmeester Team is particularly interested in the way the care sector and social housing are evolving, as these issues are bound to have a far-reaching impact on the development of the regional and urban environment, and because they can give rise to interesting typological developments. A position document was drawn up with the two sectors, based on consultation and reflecting current needs, but with a view to concepts that are clearly innovative. In a second step, a series of ambitious partners was selected to construct high-quality pilot projects.

BWMSTR

PILOOTPROJECTEN
**ONZICHTBARE
ZORG**
Innoverende zorgarchitectuur

**Pilootprojecten
Productief
Landschap**

BWMSTR



Pilootprojecten Collectief Wonen

Vijf masterplannen uit de startblokken

FASE 2

BWMSTR

Changing Practices: Design & Policy

Roundtable

Asu Aksoy

Asu Aksoy is a lecturer and researcher, working in Istanbul Bilgi University, Communications Faculty. Over the many years of research, she has carried out a diversity of projects based in British and Turkish universities, specifically focusing on urban and cultural transformations in the context of migrations, globalisation and policy change. She worked with IABR, the 5th edition, 2012 Making City, as the curator of the Istanbul test-site project.

Mark Brearley

Mark Brearley is a London based architect who has concentrated for 25 years on urban projects, nurturing and steering the evolution of places. He worked for the Mayor of London for 12 years up to 2013; firstly with Richard Rogers and the Architecture and Urbanism Unit, and from 2006 with Design for London. Between 2008 and 2013 he was the Head of Design for London, and served for several years on the Mayor's Design Advisory Panel.

George Brugmans

George Brugmans has been the executive director of the IABR since 2004. Before coming to the IABR, Brugmans built up an extensive expertise as a producer in the arts and the media. He was editor-in-chief/commissioning editor at the VPRO, a Dutch public national broadcaster, where he produced over 200 documentaries, several of which he also directed.

Kristian Koreman

Kristian Koreman founded ZUS [Zones Urbaines Sensibles] together with Elma Van Boxel in 2001, where they work on solicited and unsolicited designs and research studies in the field of architecture, urbanism and landscape design. A typical result of their proactive working method is the Test Site Rotterdam. Currently, they are working together with MIT and Urbanisten on the Rebuild by Design Project in the U.S..

Hans Tijn

Hans Tijn is the director of the department for spatial development at the Dutch Ministry of Infrastructure and the Environment. Until 2013, Hans Tijn was directing the Physical Planning Department and the Development Corporation (OGA) of Amsterdam. He was responsible for the development of real estate and new developments in the city. Hans Tijn (Nieuwe Tonge, 1961) received his doctoral degrees in political sciences as well as public administration, both cum laude, from the University of Amsterdam.

Peter Swinnen

Peter Swinnen, Freek Persyn and Johan Anrys founded the architecture practice 51N4E in 1998. Since its inception 51N4E has contributed to social and urban transformation by means of design & research. In 2010, Peter Swinnen was assigned Chief Architect (Vlaams Bouwmeester, 2010-15). As a spatial advisor to the Flemish Government Swinnen aims at enhancing the public awareness for a high quality oriented building culture. With his team of 20 experts he has developed a set of new strategic instruments allowing 'research by design' to become an integrated policy making tool.

Guilherme Wisnik

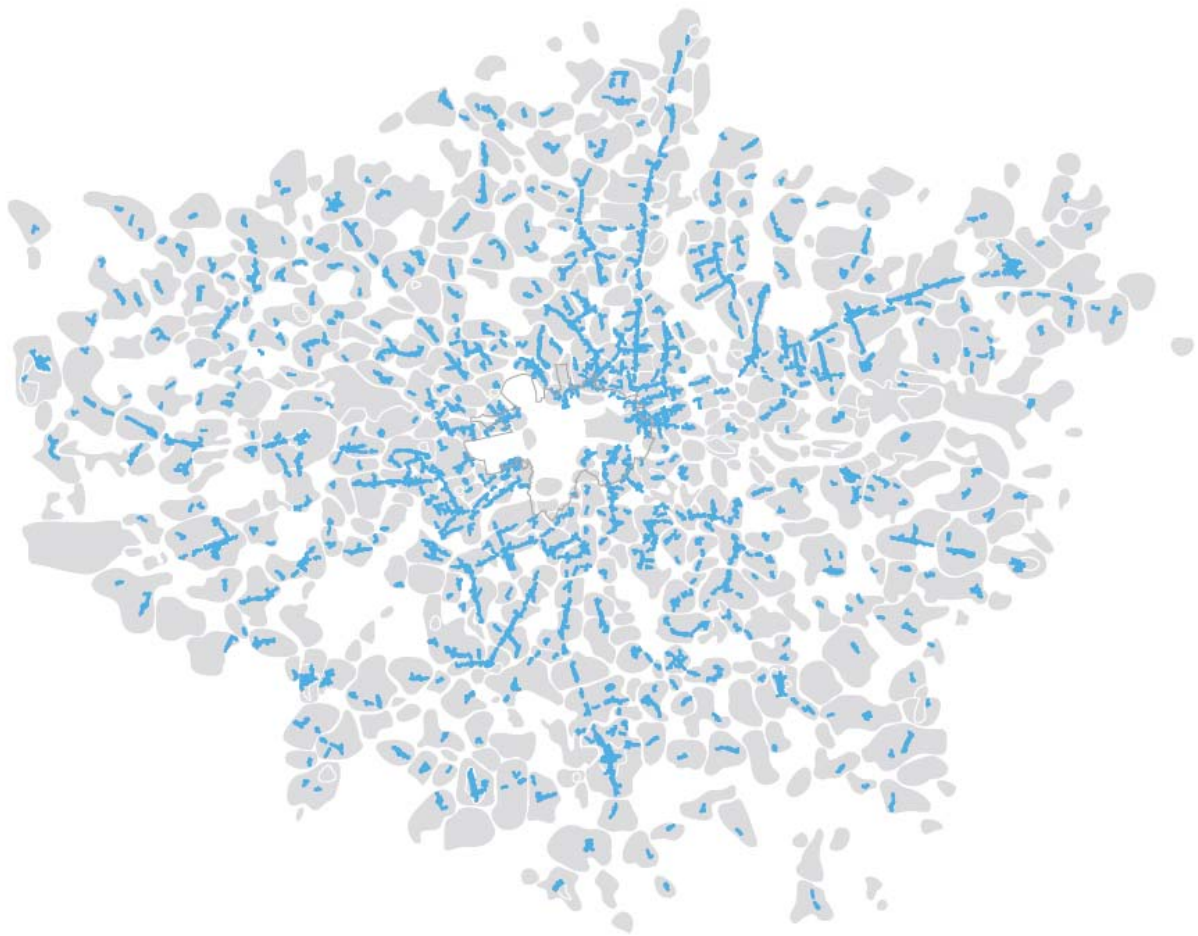
Guilherme Wisnik (1972) lives and works in São Paulo. He is an architectural and art researcher, and curator. Studied at the Faculty of Architecture and Urbanism of the São Paulo University, has a Master's degree in Social History and a PhD in History of Art and Architecture. A former partner of Metro Arquitetos Associados, he also contributes to the newspaper Folha de São Paulo. He was the curator of the 2013 Sao Paulo biennial, entitled "City: Ways of Making, Ways of Using."

**Design Mobilizes Politics
And Inspires Policies**

**Design As A Dialogue
And An Engine Of
Cooperation**

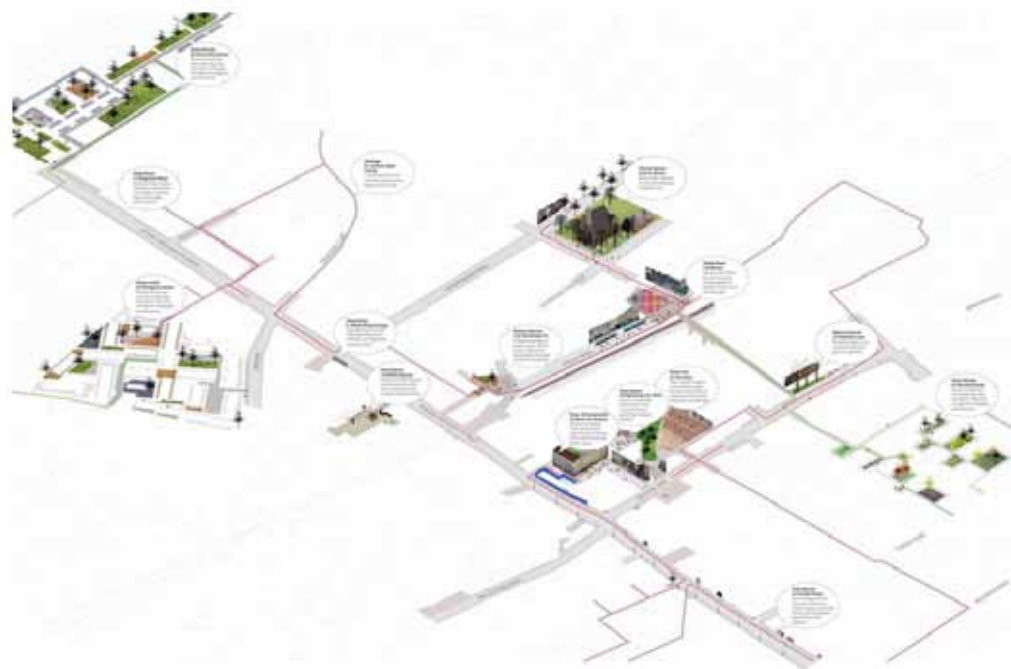
**Imagining New Platforms
For Innovation**

Design Mobilizes Politics And Inspires Policies



Rethinking High Streets
 London's high streets bring people together; they're at the heart of our daily life and economy. In fact, outside the centre, over half of London's jobs are spread across almost 600 high streets. A collaborative work on high streets supports the idea that they are diverse and flexible places, able to accommodate economic and housing growth and adapt to the changing economy of the 21st century.

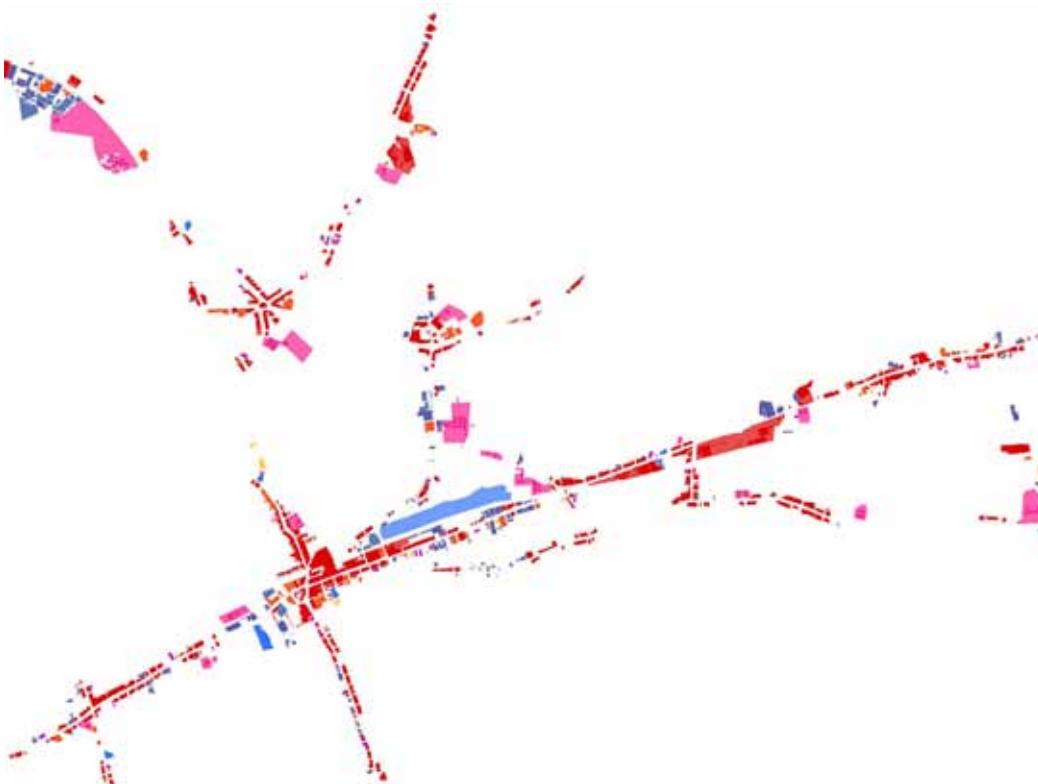
credits: Design for London



Making Space In Dalston

Making Space in Dalston presents an alternative approach to regeneration inspired by the diverse and creative community of Dalston. It addresses local concerns in concert with strategic ones through evolving a process of communication and action research to help develop a shared vision with the residents, businesses and organisations.

credits: J & L Gibbons
Landscape Architects | muf
architecture / art

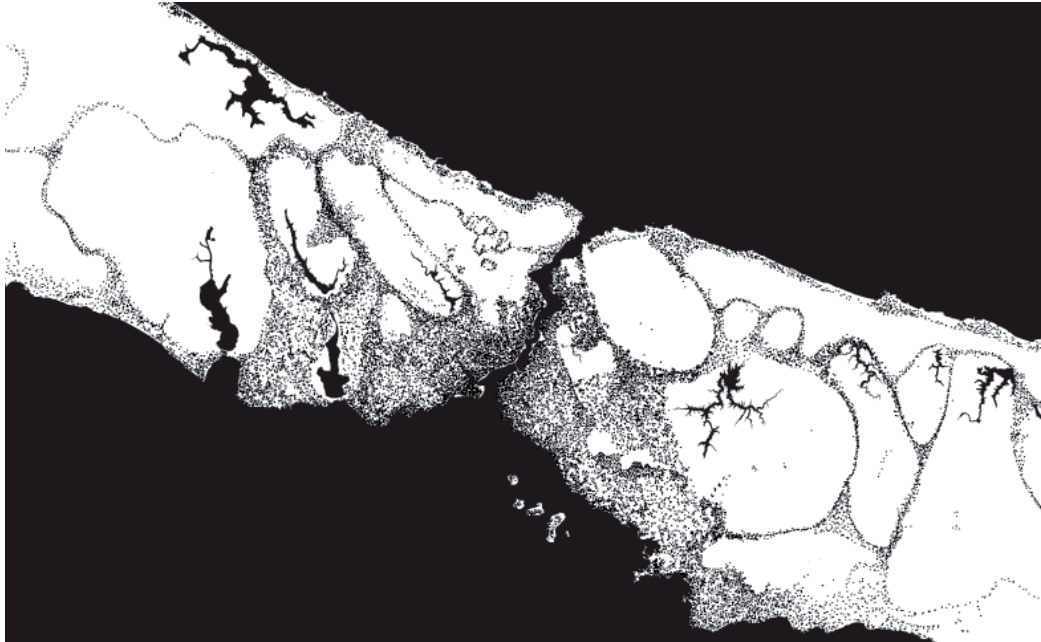


Rethinking High Streets

51 km from Uxbridge to Romford, 6.460 businesses, 79.425 jobs

credits: Mark Brearley
Head of Design for London –
Greater London Authority

Design As A Dialogue And An Engine Of Cooperation



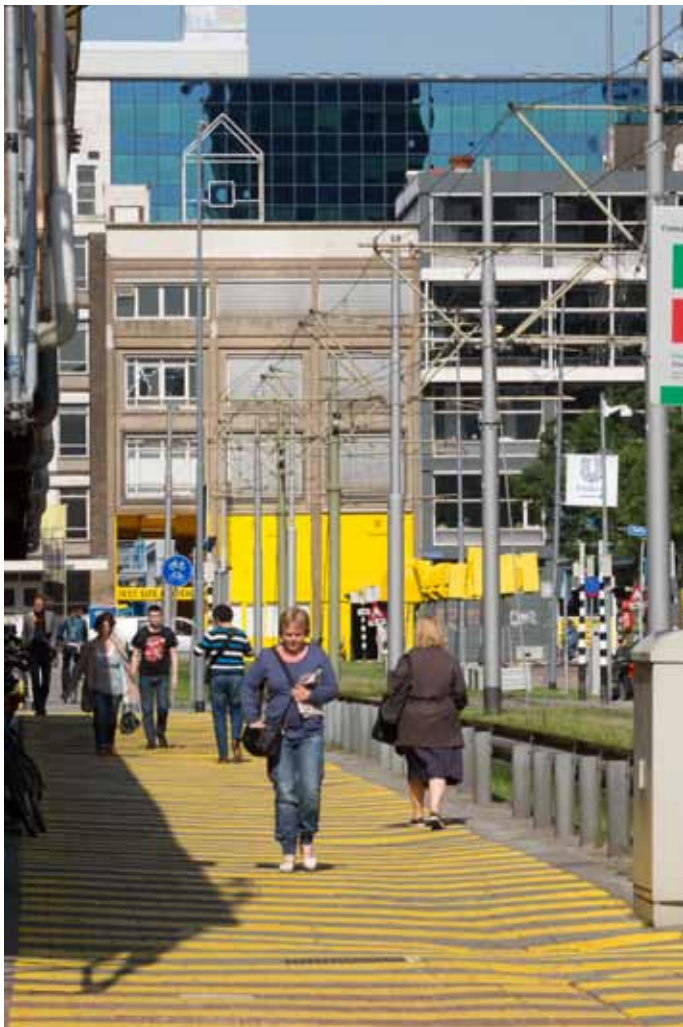
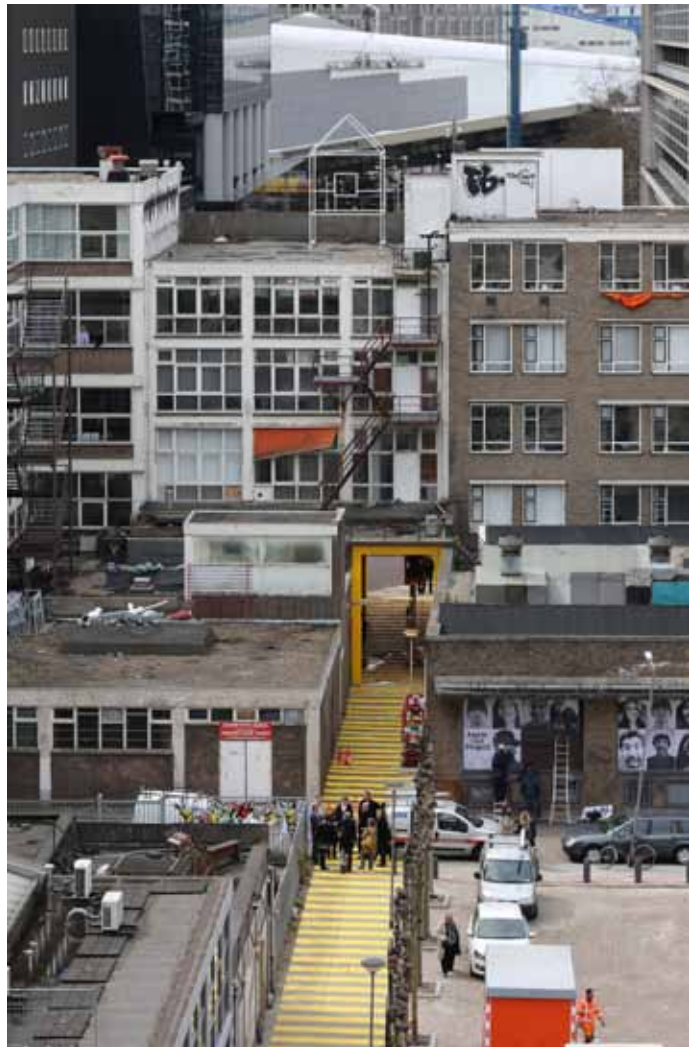
**IABR-Projectatelier
Istanbul, proposed
development pattern**

Today, in northern Istanbul, regulations are trying to limit growth by setting a maximum density. Areas under urbanization pressure are growing by spreading across

the terrain, and underutilized agricultural lands become targets for real estate developments.

Even if stricter regulations manage to remove buildings from certain protected areas, what remains is the constant pressure of sprawl.

credits: 5th International
Architecture Biennale
Rotterdam 51N4E, H+N+S,
AWB



IABR-Projectatelier Rotterdam, Test Site Rotterdam (2012)

Interdisciplinary design practice ZUS wanted to analyze and combat the economic structures and typological preconceptions that underpin any revitalization of the city, particularly in the Rotterdam Central District, and therefore started the pilot project known as the Schieblock, a former office building that was saved from demolition and gradually turned into a temporary epicenter of cultural and architectural debate. For ZUS and the IABR this jump-started the Test Site Rotterdam, the aim of which is to test new planning, design and financial instruments needed to combat further decline.

credits: IABR en Ossip van Duivenbode



**Collaboration by Design,
Rebuild by Design**
Working with and forming coalitions of local stakeholders –including residents, nonprofit organizations, business owners, government and elected officials, and others – to achieve the level of specificity and detail needed to drive their ideas forward. From November 2013 to April of 2014, teams convened over 350 small group meetings and more than 50 community workshops and outreach events throughout New York and New Jersey. The design teams developed and refined their selected ideas into implementable and fundable solutions.

credits: Rebuild By Design



Imagining New Platforms For Innovation

Biennale Sao Paolo, A networked biennial

A still boosted economy and independently regulated architectural profession are the defining marks of 2013. The consciousness of this moment's historic importance was IABsp's motivation to take on the challenge of organizing the X São Paulo Architecture Biennial. IABsp's goal with the biennial's tenth edition is to resume the path of architecture's real participation in the production of Brazilian space and make it so its contribution to the serious problems that society faces is possible.

credits: X Architecture
Biennale in São Paulo.

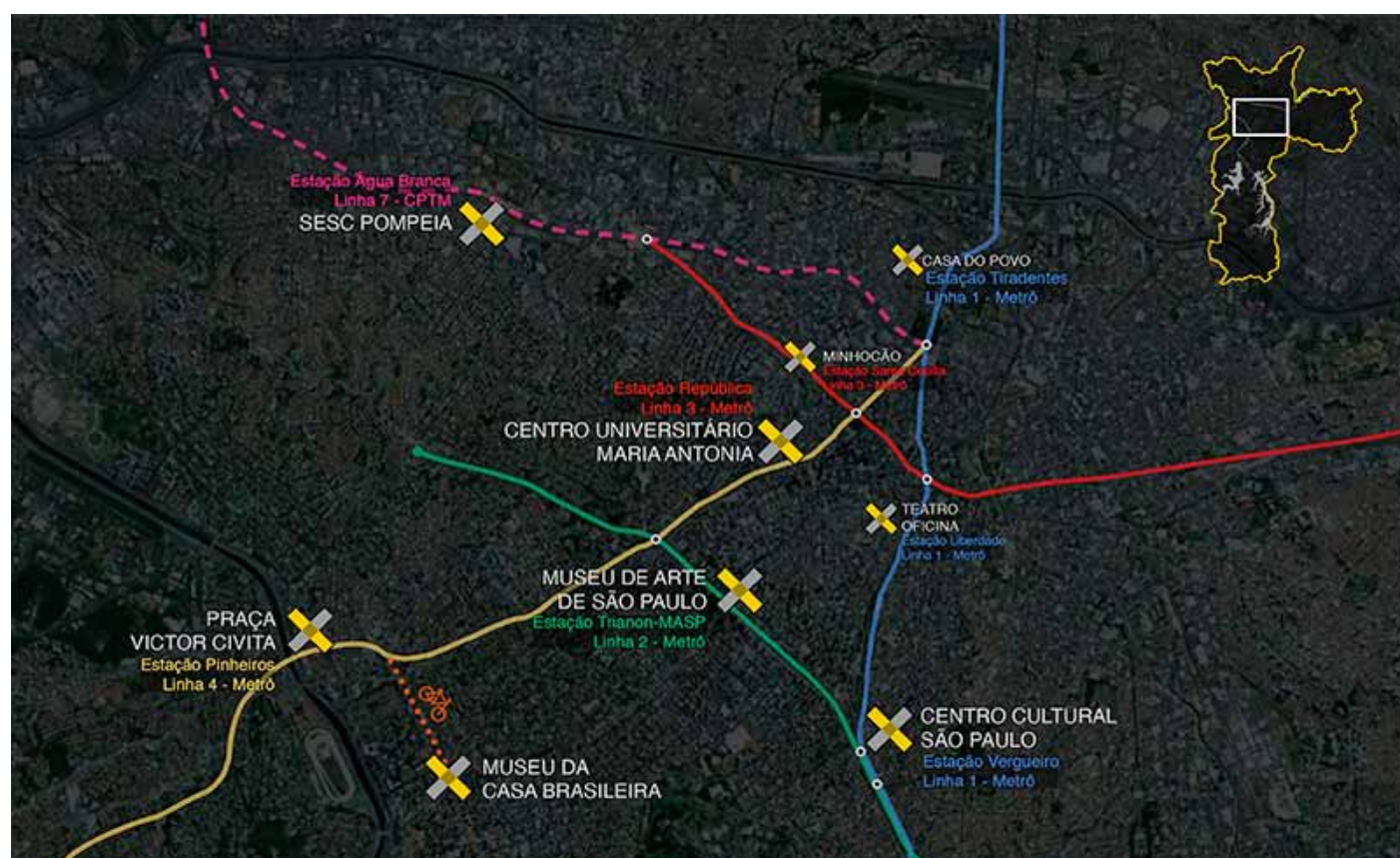


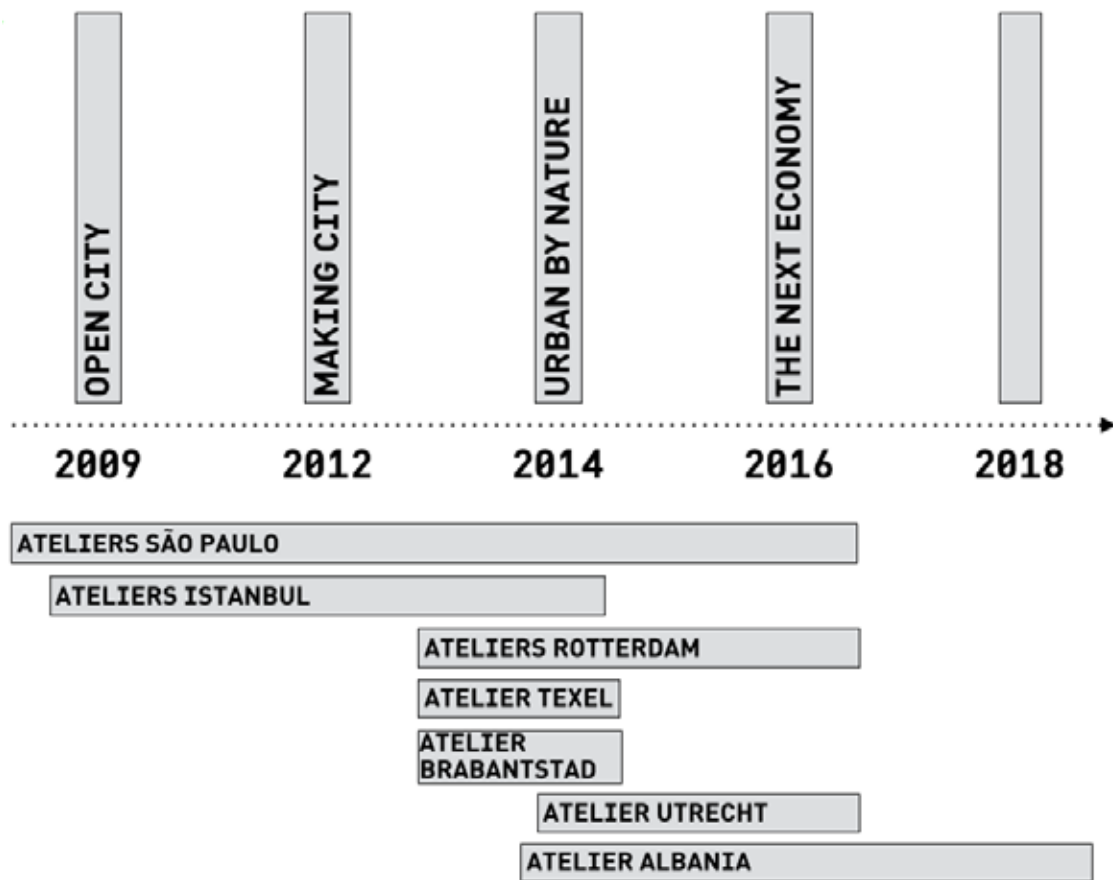
Activism exhibition
Penetrable in the Araçá Cemetery

credits: Cildo Meireles



Building of the cidade tiradentesbridge





The IABR as Submarine

The IABR has developed a sustainable and open working method: each edition is a search for new viewpoints and new perspectives, but also elaborates on the content of previous editions. Knowledge and results accumulate. The IABR continues to work on focusing, intensifying, and developing its program.

Each Biennale thus takes much longer than the three to four months during which it manifests publicly. So the IABR is like a submarine. Underwater, its periscope scanning the world, it steadily glides along; Ateliers for research by design onboard. Then, every other year, it rises its tower to show itself and manifest as a Biennale.



The East London Green Grid

The East London Green Grid is the agreed delivery mechanism for central government's Greening The Gateway Programme in London, emerging ideas for a Thames Parklands develop this relationship further.

credits:
Grater London Authority.
Map Graphics: Nathan Jones
and Eleanor Fawcett

Next Steps

Final Remarks by Patrick Janssens

Patrick Janssens

Patrick Janssens (°1956) is visiting professor of urbanism at the University of Antwerp and at the Catholic University of Louvain and co-founder and director at the Centre for Urban Development, a spin-off of the University of Antwerp. After a career in academic research and the private sector (marketing and advertising), he became chairman of the Flemish socialist party in 1999. He was a member of parliament (2003-2014) and mayor of the city of Antwerp (2003-2012).

Floris Alkemade

Floris Alkemade joined the Office for Metropolitan Architecture in 1989 and has worked as a project director for architecture and urban planning since 1996. As of 2001 he was one of the directors/partners of the office. As project architect and project leader he worked in the early nineties on the Euralille master plan, a 70-hectare business and civic centre in northern France hosting the European hub for high-speed trains. The implementation of the master plan in only four years gave the office's urban theories practical credibility. Since 1994, he has led the master plan project for the City Center of Almere, now constructed. Floris Alkemade has acted as project leader for several urban projects in Europe and Asia and the competition for Les Halles in the center of Paris. In 2002 the pop music hall 'het Paard van Troje' in the Hague was completed. In 2004, the Souterrain tram tunnel (The Hague) and the Utopolis complex (Almere) and in 2006 the Ruhrmuseum in a former Kohlewasche building in the Zeche Zollverein (Germany) were completed. Floris Alkemade started his own practice FAA in August 2008, amongst other projects currently working on the reconversion of a 600m long entrepôt building at the Boulevard Mc Donald in Paris, a housing project located at the Seine in Boulogne Billancourt, a masterplan for Paris Saclay and also Ardoines (Vitry). For the Rotterdam Biennale 2014, he is working on a study for BrabantStad.

Asu Aksoy

Asu Aksoy is a lecturer and researcher, working in Istanbul Bilgi University, Communications Faculty. Over the many years of research, she has carried out a diversity of projects based in British and Turkish universities, specifically focusing on urban and cultural transformations in the context of migrations, globalisation and policy change. She has published widely on these topics, addressing the impact of global migrations on cultural politics in Western Europe. She has also written extensively about the transformation of Istanbul in the context of the globalisation of the city. She co-authored a book on the cultural economy of Istanbul as part of a large-scale research on Istanbul as a cultural capital. Dr. Aksoy worked on the founding of santralistanbul, an international arts and culture centre initiated by Istanbul Bilgi University. This was a unique project involving the conservation and rehabilitation of an industrial heritage site, undertaken by an educational institution. She was one of the key members of the Initiative Group that was set up to prepare the bid

for Istanbul to become the 2010 European Capital of Culture. She worked with IABR, the 5th edition, 2012 Making City, as the curator of the Istanbul test-site project. As part of the IABR team, she co-curated the Making City Istanbul exhibition for the 1st Istanbul Design Biennale. She also took part in the 1st Istanbul Design Biennale with her own work, titled Adil Kebap Dürüm, conceptualised and implemented jointly with Kevin Robins and Kaan Çuhacı.

Pierre Belanger

Pierre Bélanger is Associate Professor of Landscape Architecture at the Harvard Graduate School of Design, Co-Director of OPSYS, and Advisor to the US Army Corps of Engineers. As part of the Department of Landscape Architecture and the Advanced Studies Program, he teaches courses on the convergence of ecology, infrastructure and urbanism in the interrelated fields of design, planning and engineering. He is author of the forthcoming book, *Landscape Infrastructure: Urbanism beyond Engineering* (MIT Press, 2014), and editor of the *Landscape Infrastructures* DVD (Canadian National Research Council, 2009). Recent publications include *Urbanism beyond Engineering* (*Infrastructure Sustainability & Design*, 2012), *The Agronomic Landscape* (GAM, 2011), *Regionalization* (JOLA, 2010), *Redefining Infrastructure* (*Ecological Urbanism*, 2010), *Landscape as Infrastructure* (*Landscape Journal*, 2009).

Fred Van Beuningen

Fred van Beuningen is managing director of Rotterdam Partners, the promotor of the Rotterdam economy. Rotterdam Partners serves all target groups that are relevant to the urban economy and city marketing: businesses, business or leisure visitors, local residents and students. Rotterdam Partners acts as the connection between businesses, institutions and the municipal government of Rotterdam.

Launched on 1 January 2014, the foundation is a merger between the Economic Development Board Rotterdam, Rotterdam Investment Agency and Rotterdam Marketing.

Fred van Beuningen is born and raised in Rotterdam. He has had a highly international career, including extensive management experience in industry and port-related logistics for such companies as Shell and Hoek Loos. Before joining Rotterdam Partners he has been working on sustainability strategy and marketing at AkzoNobel.

Roelof Bleker

Roelof Bleker has been Dijkgraaf of the Rivierenland water board since October 2010. Previously, he was the Alderman of Spatial Planning with the municipality of Enschede for nine years. His experience as an alderman serves him well in deliberations with the various municipalities in the water board management area.

Mark Brearley

Mark Brearley is a London based architect who has concentrated for 25 years on urban projects, nurturing and steering the evolution of places. In 1996 he established the urban strategy consultancy East where he was a partner for six years, gaining a reputation for a patient and provocative role in regeneration and city adjustment.

He worked for the Mayor of London for 12 years up to 2013; firstly with Richard Rogers and the Architecture and Urbanism Unit, and from 2006 with Design for London. Between 2008 and 2013 he was the Head of Design for London, and served for several years on the Mayor's Design Advisory Panel.

Mark has extensive experience as a teacher and is currently guest professor at The Cass Aldgate, where he leads the Cass Cities initiative. He has recently established Mark Brearley's Office at the Cass, and has commenced a collaboration with the Victoria & Albert Museum to assemble an archive of contemporary urban design in London. He is also the proprietor of a manufacturing business in Bermondsey.

He has lectured widely in the UK, Europe and beyond, and has collaborated on special projects and workshops in London, and in other cities including Rotterdam, Almere, Copenhagen, Berlin, Limerick, Lille and Paris. His work and ideas have been widely disseminated, and he has coordinated many publications.

George Brugmans

George Brugmans has been the executive director of the IABR since 2004. He chaired the Curator Team of the 5th IABR: Making City. He is also the director of iabr/UP, and one of the initiators of Atelier Albania, advisor to the Albanian Minister of Urban Development and Tourism.

Before coming to the IABR, in 2004, Brugmans built up an extensive expertise as a producer in the arts and the media. He is the founder and owner of Amago, an Amsterdam based independent film and media production company, that (co)produced films of well-known directors such as Oscar-winner

Mike Figgis, Jos de Putter, Klaartje Quirijns and Rob Schröder.

He was editor-in-chief/commissioning editor at the VPRO, a Dutch public national broadcaster, where he produced over 200 documentaries, several of which he also directed.

As chairman of Bergen, a Dutch film production company, he was one of the producers of *Antonia's Line* – Academy Award® (Oscar®) for Best Foreign Film (1995). He (co-) wrote scenarios for feature films, including *De Wisselwachter/The Pointsman* (released in 1986), and *De Vliegende Hollander/The Flying Dutchman* (1995).

Before moving to film Brugmans had an international career in the performing arts, including being co-founder and the first director of the Springdance Festival in Utrecht (1986-1992), artistic director of the Summerfestival of Salzburg, Austria (1990-1992), and co-founder and artistic director of the Encontros Acarte Festival in Lisbon, Portugal (1987 – 1990).

Brugmans (trained as an historian at the Universities of Utrecht and Florida) wrote the libretto of the opera *Fausto* (Salzburg, Austria, 1992), and he was guest curator of the Polverigi Festival (Ancona, Italy, 1989), curator of the video-exhibition *Alma e Corpo* (Porto, Portugal, 1993), curator of the Canada Dance Film Festival (Ottawa, Canada, 1994), guest curator at the Design Academy Eindhoven (2004), as well as a member of the Committee of Cultural Consultants of the European Commission in Brussels, advisor to the Dutch Government on international cultural policy as a member of the National Art Council, and the vice-chairman of the Board of Governors of the Amsterdam Art Council.

Joachim Declerck

Joachim Declerck is co-founder and director of Architecture Workroom Brussels, European Centre for Innovation in Architecture and Urbanism. Educated as architect and urban designer at Ghent University (BE) and the Berlage Institute (NL), Declerck's activities focus on innovation within the disciplines of architecture and urban design, while exploring their role within the transformation of the built environment.

From 2005 till 2010, Declerck has been working at the Berlage Institute in Rotterdam, where he directed the professional development program from 2008 till 2010. He was co-curator of the 3rd International Architecture Biennale Rotterdam (IABR), *Power-Producing the Contemporary City*, together with Vedran Mimica, and of the exhibition *A Vision for Brussels* (both in 2007).

In 2010, Declerck founded Architecture Workroom, together with Roeland Dudal. AW collaborates with public and/or private parties to initiate and coordinate prospective design studies that aim at the development of innovative responses to societal and urban challenges. AW's ambition is to contribute to the development and international exchange of knowledge and expertise in the field of design, by means of a residency program, publications, conferences and exhibitions.

Since its launch in 2010, AW has developed a number of projects and programs on topics ranging from metropolitan governance and projects, to the innovation in housing typologies. Declerck has been curator of the exhibition Building for Brussels. Architecture and Urban Transformation in Europe (Bozar, 2010). He was also member of the curator team of the 5th International Architecture Biennale Rotterdam, entitled Making City, which opened in April 2012. Declerck also headed the team that exhibited an alternative development vision for the Eurodelta-metropolis, entitled The Ambition of the Territory, at the Belgian pavilion during the 2012 Venice Architecture Biennale.

Eric Frijters

Eric Frijters is Principal at FABRIC – architecture, urbanism, regional strategies and Professor (Lector) Future Urban Regions (FUR) at the Dutch Academies of Architecture. He studied architecture at the Karlsruhe Institute of Technology, Philosophy at the University of Amsterdam and graduated Cum Laude at the Eindhoven University of Technology. Frijters is (co)author of several books such as 'Farm Tycoon', 'Tussenland', 'Architect by accident' and 'The making of ...' and published in various journals.

Frijters is co-founder of FABRIC together with Olv Klijn and in 2010 they win the Prix de Rome. In 2011 both Frijters and Klijn receive recognition as one of the 40 emerging European architects under 40 years old. One year later they are nominated for the Iakov Chernikhov International Architecture Prize 'for designers, that stand in the field experiment with innovative architecture, education and research in architecture and urbanism'.

As of June 2013 Frijters leads the research group FUR, carrying out activities which leans on three pillars: research on healthy urbanization, design thinking methodology and testing results of both pillars in studios at Academies of Architecture.

Maarten Hajer

Maarten Hajer is Director-General of PBL - Netherlands Environmental Assessment Agency since 2008. Hajer is member of the UN's International Resource Panel (IRP) hosted by UNEP, concerned with strategic issues of resource scarcity, decoupling and resource-efficiency. Maarten Hajer is also professor of Public Policy at the University of Amsterdam and holds an honorary professorship at the University of Copenhagen.

Hajer is the author of many books including The Politics of Environmental Discourse – Ecological Modernization and the Policy Process (OUP 1995), Authoritative Governance: Policy Making in the Age of Mediatization (OUP 2009) and Strong Stories – how the Dutch reinvent their Planning Practice (2010, 010-Publishers, Rotterdam, editor together with Jantine Grijzen en Susan van't Klooster). In 2011 he wrote the essay The Energetic Society – towards a Philosophy of Governance for a Clean Economy, available via www.pbl.nl/en

PBL is responsible for the strategic assessments and policy evaluations to facilitate political deliberation and decision making, ranging from environment, nature, and land use to water and transport. While primarily focused on the Dutch political decision making, PBL is also active for international bodies, such as the European Commission, OECD and UNEP.

Patrick Janssens

Patrick Janssens (°1956) studied sociology and applied economics at the university of Antwerp and statistics at the London School of Economics. After a career in academic research and the private sector (marketing and advertising) he became chairman of the Flemish socialist party in 1999. He was a member of parliament (2003-2014) and mayor of the city of Antwerp (2003-2012). He is currently visiting professor of urbanism at the University of Antwerp and at the Catholic University of Louvain and co-founder and director at the Centre for Urban Development, spin-off of the University of Antwerp.

Nancy Kete

Dr. Nancy Kete joined the Rockefeller Foundation in January 2012. As Managing Director, Dr. Kete leads the foundation's global work on resilience including developing strategies and practice for infusing resilience thinking throughout the foundation's work.

During her 25 year career in government, civil society, and private sector, Dr. Kete brought technical, institutional, and managerial leadership

to bear on a number of major environment and societal challenges. She has been a diplomat, a climate change negotiator, a social entrepreneur, and a highly successful fund-raiser. Before joining the Foundation, Dr. Kete spent thirteen years at the World Resources Institute (WRI), first as Director of the Climate, Energy, and Pollution Program and then as founder and Director of EMBARQ, a distinguished program that catalyzed environmentally sustainable transport solutions to improve quality of life in cities in Mexico, Brazil, India, Turkey and the Andean region.

She also served on President Obama's National Commission on the BP Deepwater Horizon Oil Spill and Offshore Drilling. In her role as Senior Advisor on Corporate Safety and Risk Management, Dr. Kete provided recommendations on unilateral steps the industry should take to improve safety above and beyond what the regulations would require.

Earlier in her career, Dr. Kete worked for the US Environmental Protection Agency where she led the development of the acid rain control title of the 1990 Clean Air Act Amendments, the first and as yet most successful application of market instruments for pollution control.

Dr. Kete holds a PhD in Geography and Environmental Engineering from Johns Hopkins University and a bachelor's in Geography from Southern Illinois University.

Kristian Koreman

Kristian Koreman studied landscape architecture at IAH Larenstein, architecture and urbanism and philosophy, Erasmus University Rotterdam (Koreman). He founded ZUS [Zones Urbaines Sensibles] together with Elma Van Boxel in 2001, where they work on solicited and unsolicited designs and research studies in the field of architecture, urbanism and landscape design.

Realized projects include the landscape design of the Dutch Pavilion for the Shanghai World Expo 2010, the Central Park on the World Expo, the Printemps park at Grand Bigard Brussels and the exhibition pavilion Spiegelzee on the Dutch coast. Large-scale urban plans, such as Almere Duin, are under construction. A typical result of their proactive working method is the Test Site Rotterdam. Currently, they are working together with MIT and Urbanisten on the Rebuild by Design Project in the U.S.

Van Boxel and Koreman were curators for the International Architecture Biennale Rotterdam 2012 'Making City' and selected as Lab Members for the BMW Guggenheim Lab in New York. Critical research results in books and articles such as 'Laboratory Rotterdam: Decode Space' (AIR

publishers 2007) and 'Re-public' (NAi Publishers 2007). Both founders teach and lecture at universities world wide.

The duo received the 'Maaskant Prize for Young Architects 2007'. They were awarded 'Architects of the Year 2012', nominated for the AM-NAi-prize, second for the Gouden Piramide 2013 and awarded with the 'Berlin Urban Intervention Award 2013' and 'Public Architecture Prize Rotterdam 2013'.

Dirk Sijmons

Curator of IABR-2014-URBAN BY NATURE-, Dirk Sijmons studied Architecture at Delft University of Technology and is one of the three founders of H+N+S Landscape Architects. Dirk Sijmons was awarded the Rotterdam-Maaskant Prize in 2002. In 2004, Dirk Sijmons was appointed Governmental Advisor on Landscape by the Minister of Agriculture, Nature Management and Fisheries. In 2007, he received the prestigious Edgar Doncker prize in the category of 'true Dutch culture'. In addition to his work for H+N+S, Sijmons is currently Professor of Landscape Architecture at Delft University of Technology.

Peter Swinnen

Peter Swinnen (°1972) graduated as an architect from the Architectural Association London (1997) and the HAISL Brussels (1995). He founded 51N4E together with Freek Persyn and Johan Anrys in 1998. Since its inception 51N4E has contributed to social and urban transformation by means of design & research. The office gained renown through key projects such as the TID Tower, C-Mine, Skanderbeg Square, Istanbul-Arnautköy masterplan, BUDA arts centre and the experimental Arteconomy House. In 2014 Peter Swinnen resigned as partner at 51N4E.

In 2010 Peter Swinnen was assigned Chief Architect (Vlaams Bouwmeester, 2010-15). As a spatial advisor to the Flemish Government Swinnen aims at enhancing the public awareness for a high quality oriented building culture. With his team of 20 experts he has developed a set of new strategic instruments allowing 'research by design' to become an integrated policy making tool. At present Peter Swinnen is preparing a PhD entitled 'On architectural trust, doubt & impact – an agonistic implementation', a plea for a cooperative operational environment at the core of the architectural discipline.

Hans Tijl

Hans Tijl is the director of the department for spatial development at the Dutch Ministry of

Infrastructure and the Environment. Until 2013, Hans Tijl was directing the Physical Planning Department and the Development Corporation (OGA) of Amsterdam. He was responsible for the development of real estate and new developments in the city. OGA is the administrator for the municipal held lands in the city (about 80%) with an actual value of about 60 billion euro. As OGA's project director Hans Tijl was responsible for a score of projects.

Tijl is deeply involved in realizing the opportunities ICT and broadband for a sustainable economic and social development of Amsterdam. In April 2007 he was elected Chairman of the Board of INEC, the International Network of E-Communities with members in the US, Asia, Latin America and Europe.

Hans Tijl (Nieuwe Tonge, 1961) received his doctoral degrees in political sciences as well as public administration, both cum laude, from the University of Amsterdam.

Guilherme Wisnik

Guilherme Wisnik (1972) lives and works in São Paulo. Architectural and Art researcher, Curator. Studied at the Faculty of Architecture and Urbanism of the São Paulo University, has a Master's degree in Social History and a PhD in History of Art and Architecture. A former partner of Metro Arquitetos Associados, he also contributes to the newspaper Folha de São Paulo. He wrote the screenplay for the feature film *The Line – Lucio Costa and the Modern Utopia* (2003), and is the curator of *Margin* (2010), a Public Art project supported by Itaú Cultural, *Rio-oir*, an Art Project by Cildo Meireles (2011) at the same institution, and the 10th edition of the São Paulo Architecture Biennale (2013). His books include *Lucio Costa* (Cosac Naify, 2001), *Caetano Veloso* (Publifolha, 2005), *Critical State* (Publifolha, 2009) and *Oscar Niemeyer* (Folha de S. Paulo, 2011). He edited the issues about Paulo Mendes da Rocha and Vilanova Artigas in the Spanish Architectural Review *2G* (Gustavo Gili, 2008-2010), and has written numerous chapters and essays like "Doomed to Modernity" in *Brazil's Modern Architecture* (Phaidon, 2004), "Hypotheses Concerning the Relationship Between the Work of Álvaro Siza and Brazil" in *Álvaro Siza Modern Redux* (Hatje Cantz, 2008), "Antropophagy in Reverse" in *Drifts and Derivations* (Museo Reina Sofia, 2010), and "Brasília: the City as Sculpture" in *Das verlangen Nach Form* (Akademie der Künste, 2010). He is Professor at the Faculty of Architecture and Urbanism of the São Paulo University (FAUUSP).

14.00 Welcome
George Brugmans

Introduction
Joachim Declerck

Keynote speech
Dirk Sijmons

14.35 Session I
REINVENTING DEVELOPMENT

If today we insist on consuming land and space as if it were a commodity, and without taking social and environmental costs into account, we produce the problems of tomorrow.

Keynote speech
Nancy Kete

Roundtable
with Nancy Kete, Floris Alkemade, Pierre B  langer, Fred van Beuningen, Roelof Bleker, Eric Frijters, and Dirk Sijmons

Keynote speech
Maarten Hajer

16:00 BREAK

16.30 Session II
INNOVATING PRACTICE BY DESIGN

Rethinking urban development from the perspective of synergy between space and users requires new practices. Can urban regions innovate their policies and actions by putting design first?

Keynote speech
Peter Swinnen

Roundtable
with Peter Swinnen, Asu Aksoy, Mark Brearley, George Brugmans Kristian Koreman, Hans Tijl, Guilherme Wisnik

17.35 Final Remarks
Patrick Janssens

18.00 END & DRINKS

Can design help us find an alternative model of urban development, one that does not capitalize on the exploitation of land and natural resources, but on the productive capacity of people and space?